

Comunități Open Science – Inițiative din România

BrainMap și ERRIS – Exemple de colaborare în știință

Ioana Spanache

UEFISCDI, NOAD Representative in Romania

OpenAIRE National Workshop | Bucharest | 22 Oct. 2018



@openaire_eu





Welcome to ERRIS

Registry of Romanian Research Infrastructures,
the booking gate for **research infrastructures**,
research & technological services.

INFRASTRUCTURES MAP

BROWSE REGISTRY

1.662 Infrastructures with **8.515** Research Services, **177** Technological Services, **23.005** Equipments

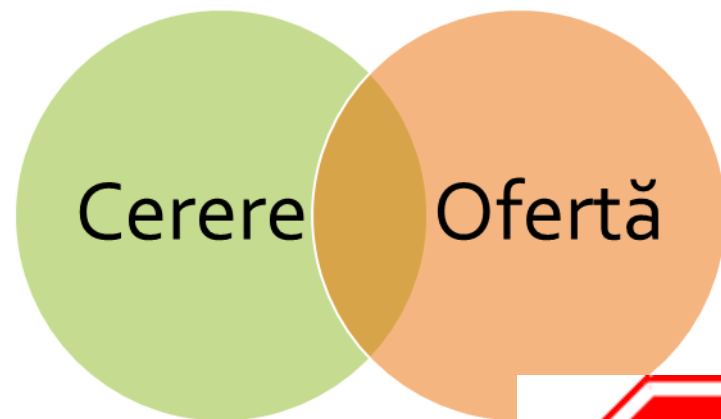


Engage in the Romanian Research Infrastructures System

- Despre
- User experience
- Viewer
- Solicitant
- Furnizor
- Decidenți
- Extindere și dezvoltare



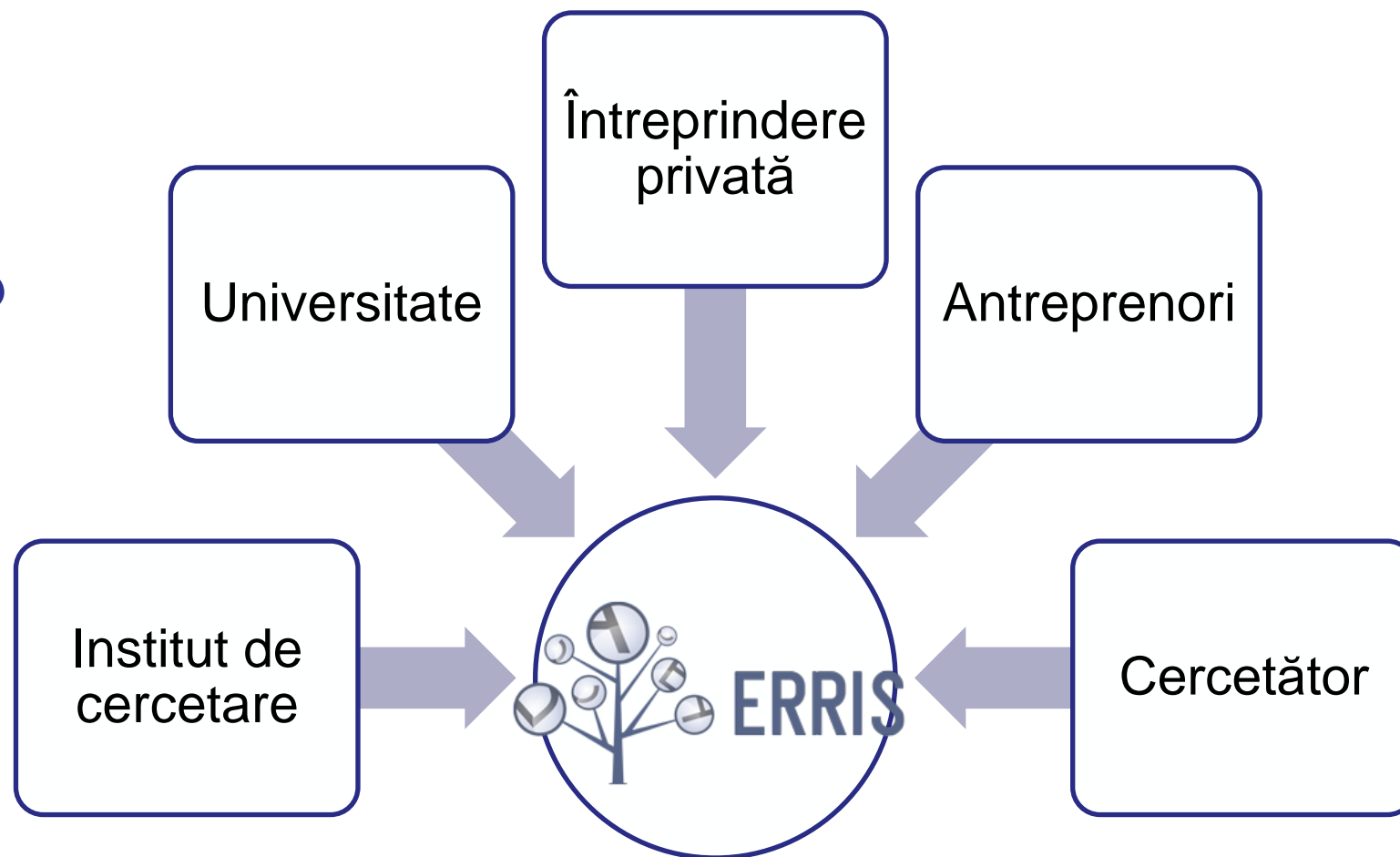
De ce ERRIS?



Infrastructuri/ Facilități	1 622
Servicii de cercetare	8 515
Servicii tehnologice	177
Echipamente	23 005

Nr. utilizatori asociați unei Org/Infra/Serv	7283
Nr. utilizatori individuali neafiliați unei IC/ organizații	1227
Nr. mesaje/ solicitări acces	419
Nr. recenzii	19
Nr. organizații	531

Pentru cine?



Ce oferă?
Echipamente
Servicii
disponibile
Echipe științifice
și tehnice
(Who is who?
Who does what?)

SCIENTIFIC & TECHNICAL TEAM

Coordinator:
Dr. Nicolae Victor ZAMFIR

[CONTACT](#)

RIR Search services, infrastructures, and equipments

Last update: 31.10.2014

Bucharest Tandem Van de Graaff Accelerator
 Horia Hulubei National Institute for R&D in Physics and Nuclear Engineering

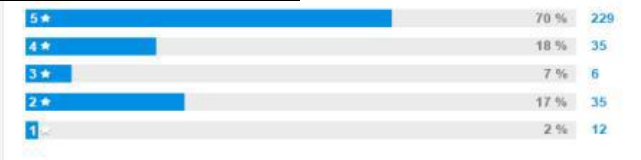
on (HVEC) in 1973 and it was later upgraded
 accelerator currently delivers 28 ion species
 on sources. A special configuration (LI charge

ACCESS TO SERVICES

- Nuclear Physics and astrophysics
- Particle physics and field theory
- Atomic physics and condensed matter physics
- Mathematical physics and information physics
- Life and environmental physics
- Applied Physics Research

VIEW EQUIPMENTS

- The Accelerator
- The Sputtering ion source
- The Alpha source
- AMS
- The Pelletron system
- Pulsing systems



Latest Reviews:

Michael Moore
 ★★★★★

About the work aspect, its a roller coaster. Sometimes you would be doing some amazing computer science stuff and some times not so much. One thing is for sure that you are going to learn a lot. As compared to strategiest position, your work would focus more cs aspect. Thats a good thing for future.

Michael Moore
 ★★★★★

About the work aspect, its a roller coaster. Sometimes you would be doing some

RELATED INFRASTRUCTURES [See map](#)

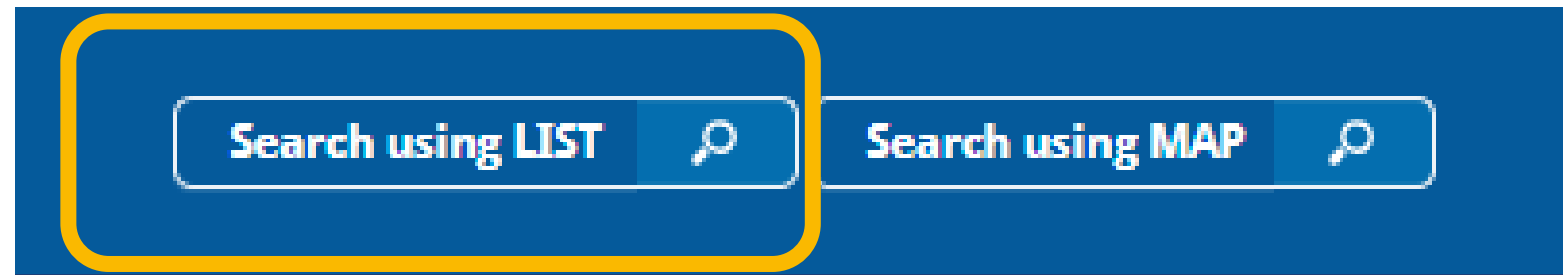
DERRI:
 Distributed Energy Resources Research Infrastructure

AIDA:
 Advanced European Infrastructures for Detectors and Accelerators

EUROPLANET RI:
 A European research infrastructure for



Utilizator simplu





Go to: Organisations List Infrastructures List Technological Services List Research Services List

Search: Find organisations by name, location, description

Results for all organisations

Page: 1 2 3 4 5 6 7 8 9 10 11 12 13 14 15 16 17 18 19 20 >>... [5] (525 results)



UNIVERSITY POLITEHNICA OF BUCHAREST

UNIVERSITATEA POLITEHNICA DIN BUCURESTI

INFRASTRUCTURES: 139 PUBLISHED AND 28 NOT PUBLISHED HQ: BUCURESTI, BUCURESTI - SECTOR 6



TECHNICAL UNIVERSITY OF CLUJ-NAPOCA

UNIVERSITATEA TEHNICA DIN CLUJ - NAPOCA

INFRASTRUCTURES: 73 PUBLISHED AND 17 NOT PUBLISHED HQ: CLUJ-NAPOCA, CLUJ



UNIVERSITY OF AGRICULTURAL SCIENCES AND VETERINARY MEDICINE OF CLUJ-NAPOCA

UNIVERSITATEA DE STIINTE AGRICOLE SI MEDICINA VETERINARA CLUJ-NAPOCA

INFRASTRUCTURES: 48 PUBLISHED AND 8 NOT PUBLISHED HQ: CLUJ-NAPOCA, CLUJ



UNIVERSITY OF BUCHAREST

UNIVERSITATEA BUCURESTI

INFRASTRUCTURES: 46 PUBLISHED AND 12 NOT PUBLISHED HQ: BUCURESTI, BUCURESTI - SECTOR 5



UNIVERSITY OF MEDICINE AND PHARMACY "CAROL DAVILA" BUCHAREST

UNIV.DE MEDICINA SI FARMACIE - CAROL DAVILA

INFRASTRUCTURES: 42 PUBLISHED AND 2 NOT PUBLISHED HQ: BUCHAREST, BUCURESTI - SECTOR 2






ALEXANDRU IOAN CUZA UNIVERSITY OF IASI

UNIVERSITATEA "ALEXANDRU IOAN CUZA" IASI


Repository organizații

Repository facilități

 **ERRIS**
ENGAGE IN THE ROMANIAN
RESEARCH INFRASTRUCTURES
SYSTEM


Search using LIST  Search using MAP 


Go to: **Organisations List** Infrastructures List Technological Services List Research Services List


Search: Find infrastructures by name, location, description, organisation 


Results for **all infrastructures**



Page: **1** 2 3 4 5 6 7 8 9 10 11 12 13 14 15 16 17 18 19 20 >>...[163] **(1622 results)**

 **RESEARCH INFRASTRUCTURE IN APPLIED SCIENCE - INCESA**
UNIVERSITY OF CRAIOVA
HQ: CRAIOVA, DOLJ

 **RESEARCH DEPARTMENT FOR CONDENSED MATTER PHYSICS AND ADVANCED MATERIALS**
NATIONAL INSTITUTE OF MATERIALS PHYSICS
HQ: MAGURELE, ILFOV

 **FACILITY FOR RESEARCH/DEVELOPMENT AND TESTING OF EXPLOSIVE MATERIALS, FLAMMABLE SUBSTANCES, EXPLOSION-PROOF EQUIPMENT AND TRAINING OF INTERVENTION STAFF FOR HAZARDOUS ATMOSPHERES - PCDIEX**
NATIONAL INSTITUTE FOR RESEARCH AND DEVELOPMENT IN MINE SAFETY AND PROTECTION TO EXPLORE PETROSANI
HQ: PETROSANI, HUNEDOARA

 **RESEARCH INFRASTRUCTURE IN CHEMISTRY AND CHEMICAL ENGINEERING - FACULTY OF CHEMISTRY AND CHEMICAL ENGINEERING - INFRACHEM - FCIC**
BABES-BOLYAI UNIVERSITY
HQ: CLUJ-NAPOCA, CLUJ

Repository servicii

Go to: [Organisations List](#) [Infrastructures List](#) [Technological Services List](#) [Research Services List](#)

Search: 

Results for all research services

Page: [1](#) [2](#) [3](#) [4](#) [5](#) [6](#) [7](#) [8](#) [9](#) [10](#) [11](#) [12](#) [13](#) [14](#) [15](#) [16](#) [17](#) [18](#) [19](#) [20](#) >>...[842] (8411 results)



Experimental and numerical evaluation of wind induced structural loads

[Boundary Layer Wind Tunnel 1 \(TASL 1\)](#)

TECHNICAL UNIVERSITY OF CIVIL ENGINEERING BUCHAREST


 INFRASTRUCTURE HQ: BUCHAREST, BUCURESTI - SECTOR 2



Estimation of pedestrian confort in urban areas

[Boundary Layer Wind Tunnel 1 \(TASL 1\)](#)

TECHNICAL UNIVERSITY OF CIVIL ENGINEERING BUCHAREST

 INFRASTRUCTURE HQ: BUCHAREST, BUCURESTI - SECTOR 2



Aeroelastic structures

[Boundary Layer Wind Tunnel 1 \(TASL 1\)](#)

TECHNICAL UNIVERSITY OF CIVIL ENGINEERING BUCHAREST

 INFRASTRUCTURE HQ: BUCHAREST, BUCURESTI - SECTOR 2



Evaluation of snow deposits and snow drift at ground level

[Boundary Layer Wind Tunnel 1 \(TASL 1\)](#)

TECHNICAL UNIVERSITY OF CIVIL ENGINEERING BUCHAREST

 INFRASTRUCTURE HQ: BUCHAREST, BUCURESTI - SECTOR 2



Radiation sterilization

[IRASM - Radiation Processing Center of the Horia Hulubei National Institute of Physics and Nuclear Engineering](#)

HORIA HULUBEI NATIONAL INSTITUTE FOR PHYSICS AND NUCLEAR ENGINEERING IFIN-HH

 INFRASTRUCTURE HQ: MAGURELE, ILFOV




Irradiation for testing of materials

[IRASM - Radiation Processing Center of the Horia Hulubei National Institute of Physics and Nuclear Engineering](#)

HORIA HULUBEI NATIONAL INSTITUTE FOR PHYSICS AND NUCLEAR ENGINEERING IFIN-HH

 INFRASTRUCTURE HQ: MAGURELE, ILFOV



Search: 

Results for all technological services

Page: [1](#) [2](#) [3](#) [4](#) [5](#) [6](#) [7](#) [8](#) [9](#) [10](#) [11](#) [12](#) [13](#) [14](#) [15](#) [16](#) [17](#) [18](#) (174 results)



Numerical Modeling and Simulations in the Hydrological Study of the Danube Flow and Danube Del
CENTRE OF SCIENTIFIC RESEARCH ON MACHINES, THERMAL EQUIPMENT AND ENVIRONMENTAL ENGINEERING IN - METIME
"DUNAREA DE JOS" UNIVERSITY OF GALATI
📍 INFRASTRUCTURE HQ: GALATI, GALATI



Numerical modeling and simulation of thermo-chemical processes of biomass conversion (combustion, pyrolysis, gasification)
CENTRE OF SCIENTIFIC RESEARCH ON MACHINES, THERMAL EQUIPMENT AND ENVIRONMENTAL ENGINEERING IN - METIME
"DUNAREA DE JOS" UNIVERSITY OF GALATI
📍 INFRASTRUCTURE HQ: GALATI, GALATI



Numerical modeling of combustion and heat transfer processes
CENTRE OF SCIENTIFIC RESEARCH ON MACHINES, THERMAL EQUIPMENT AND ENVIRONMENTAL ENGINEERING IN - METIME
"DUNAREA DE JOS" UNIVERSITY OF GALATI
📍 INFRASTRUCTURE HQ: GALATI, GALATI



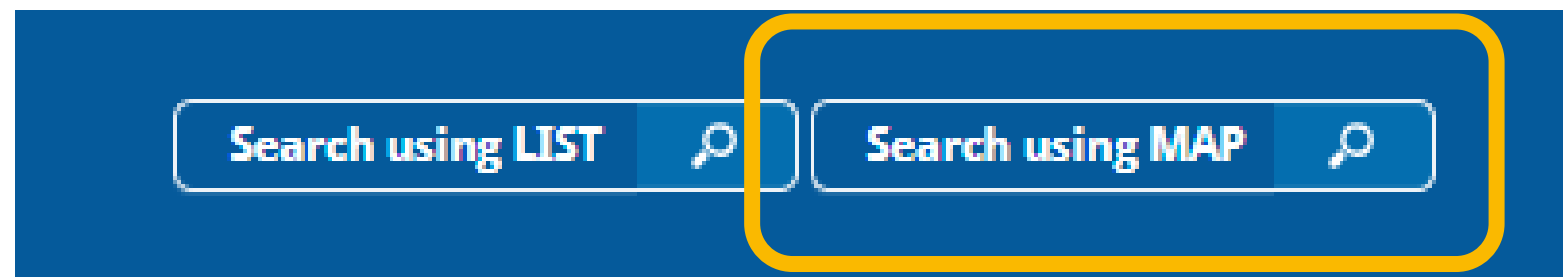
Numerical simulation in hydrodynamics and aerodynamics
CENTRE OF SCIENTIFIC RESEARCH ON MACHINES, THERMAL EQUIPMENT AND ENVIRONMENTAL ENGINEERING IN - METIME
"DUNAREA DE JOS" UNIVERSITY OF GALATI
📍 INFRASTRUCTURE HQ: GALATI, GALATI



Technological services for advanced materials, micro-/nanomaterials and sensing devices fabrication
MAGNESENS - Euroregional Advanced Research Centre for Sensors and Sensor Systems Based on Magnetic Micro-Nanomaterials
NATIONAL INSTITUTE OF RESEARCH AND DEVELOPMENT FOR TECHNICAL PHYSICS - NIRDTP IASI
📍 INFRASTRUCTURE HQ: IASI, IASI

Servicii tehnologice

Utilizator simplu





Organization name:

County:

All

City:

Cluj

Domain:

All

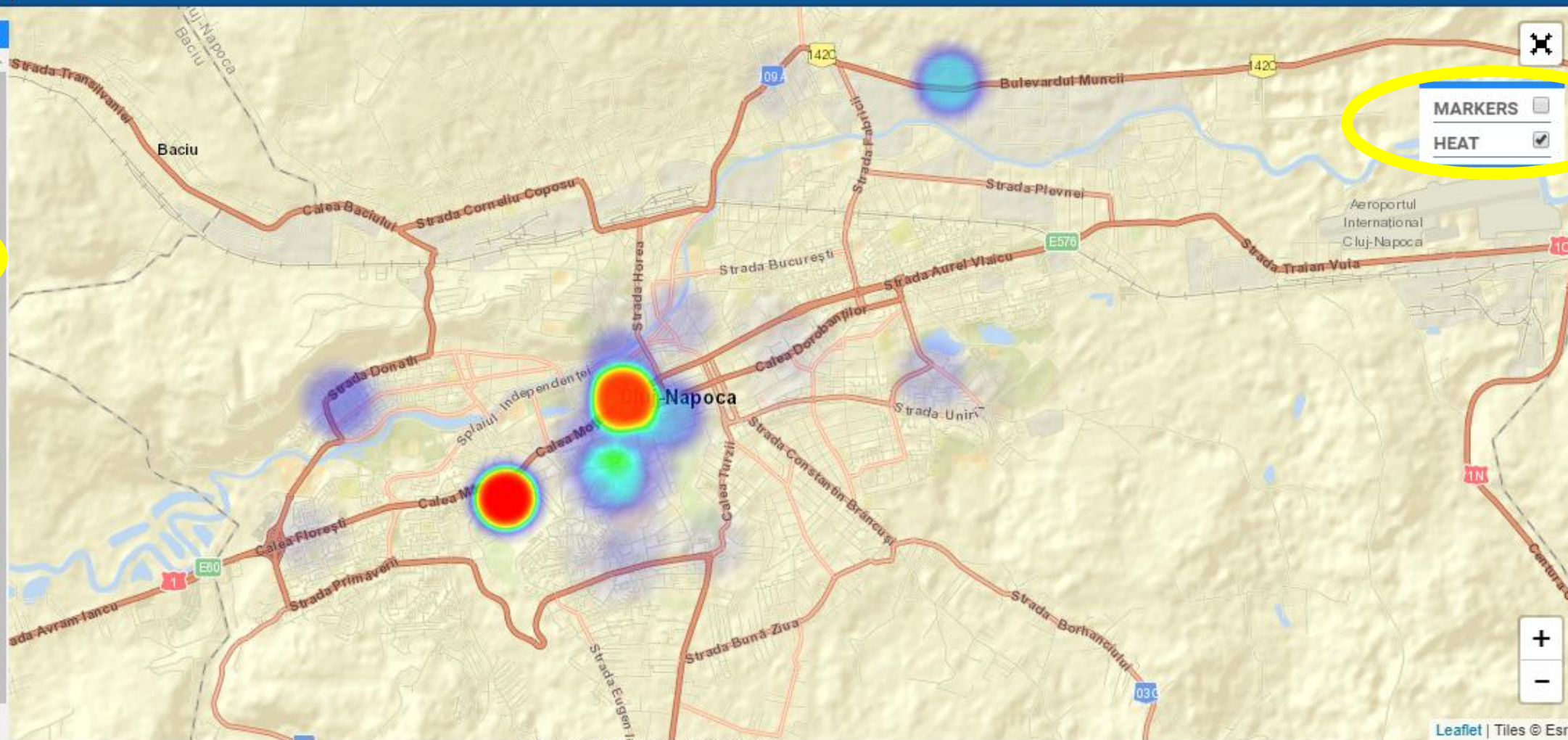
Infrastructure name:

Equipment name:

Research Service name:

Technological Service name:

SEARCH



Information updates every 15 minutes



Organization name:

County:

City:

Domain:

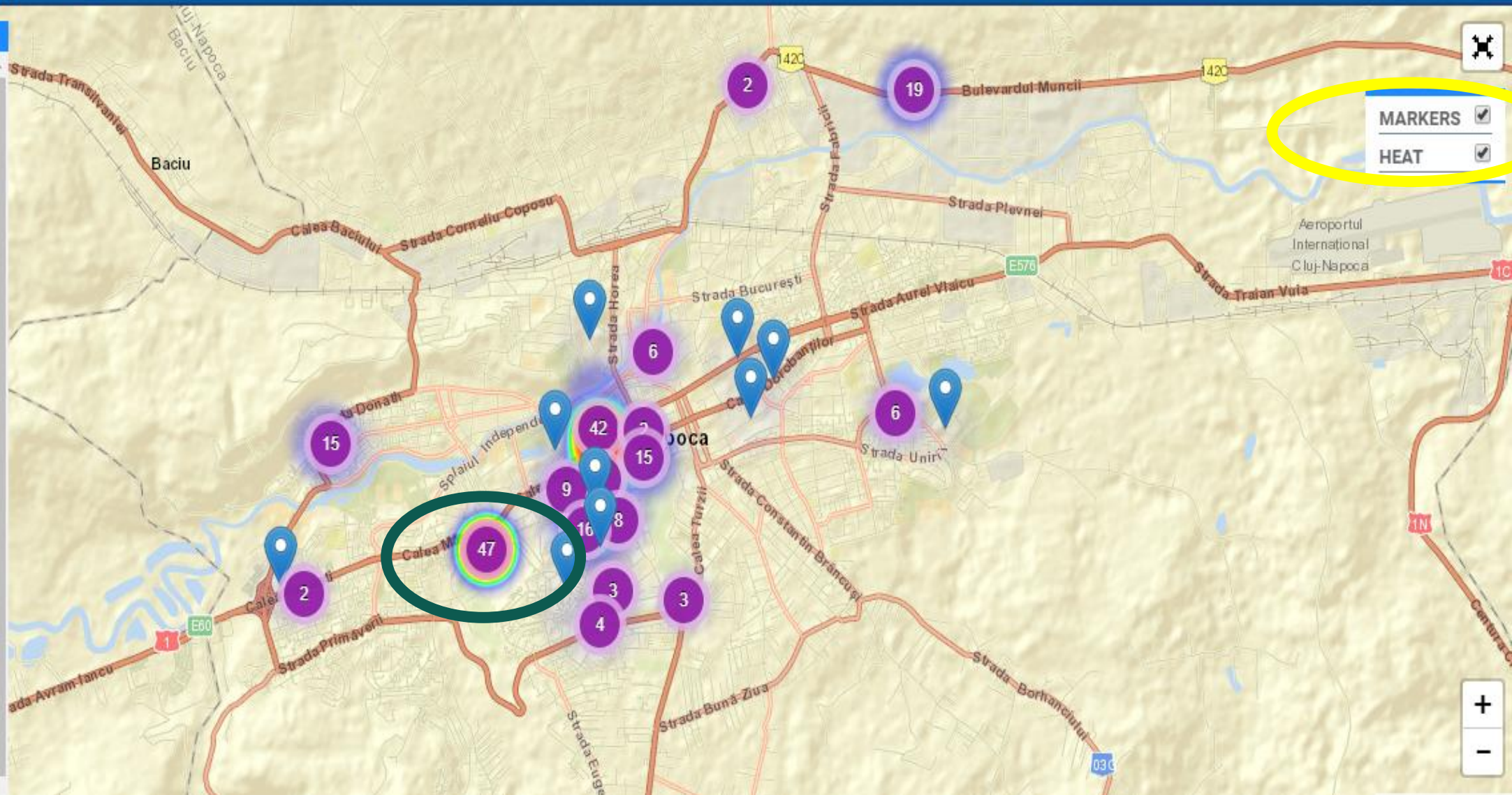
Infrastructure name:

Equipment name:

Research Service name:

Technological Service name:

SEARCH





Organization name:

County:

City:

Domain:

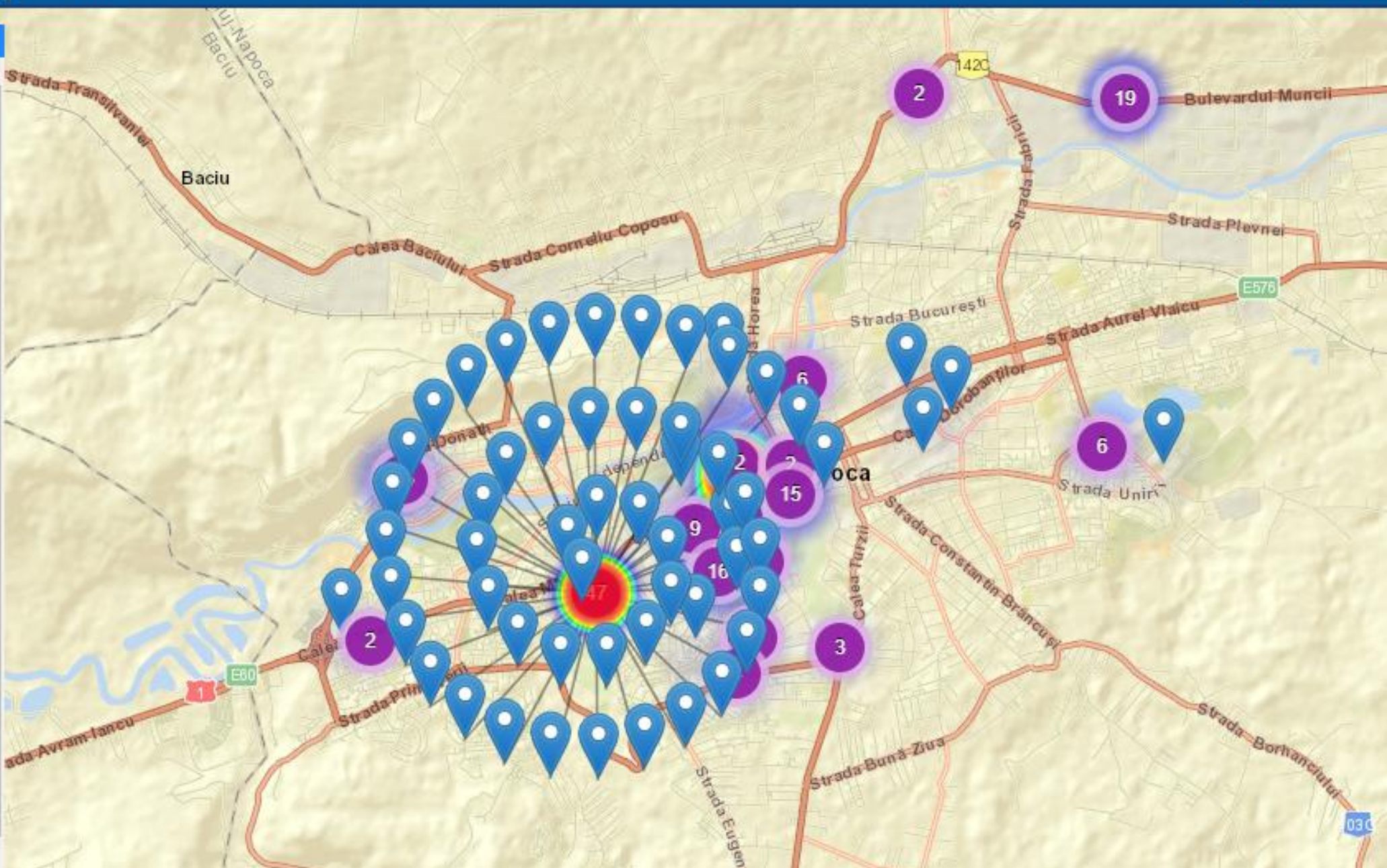
Infrastructure name:

Equipment name:

Research Service name:

Technological Service name:

SEARCH





Organization name:

County:

All

City:

Cluj

Domain:

All

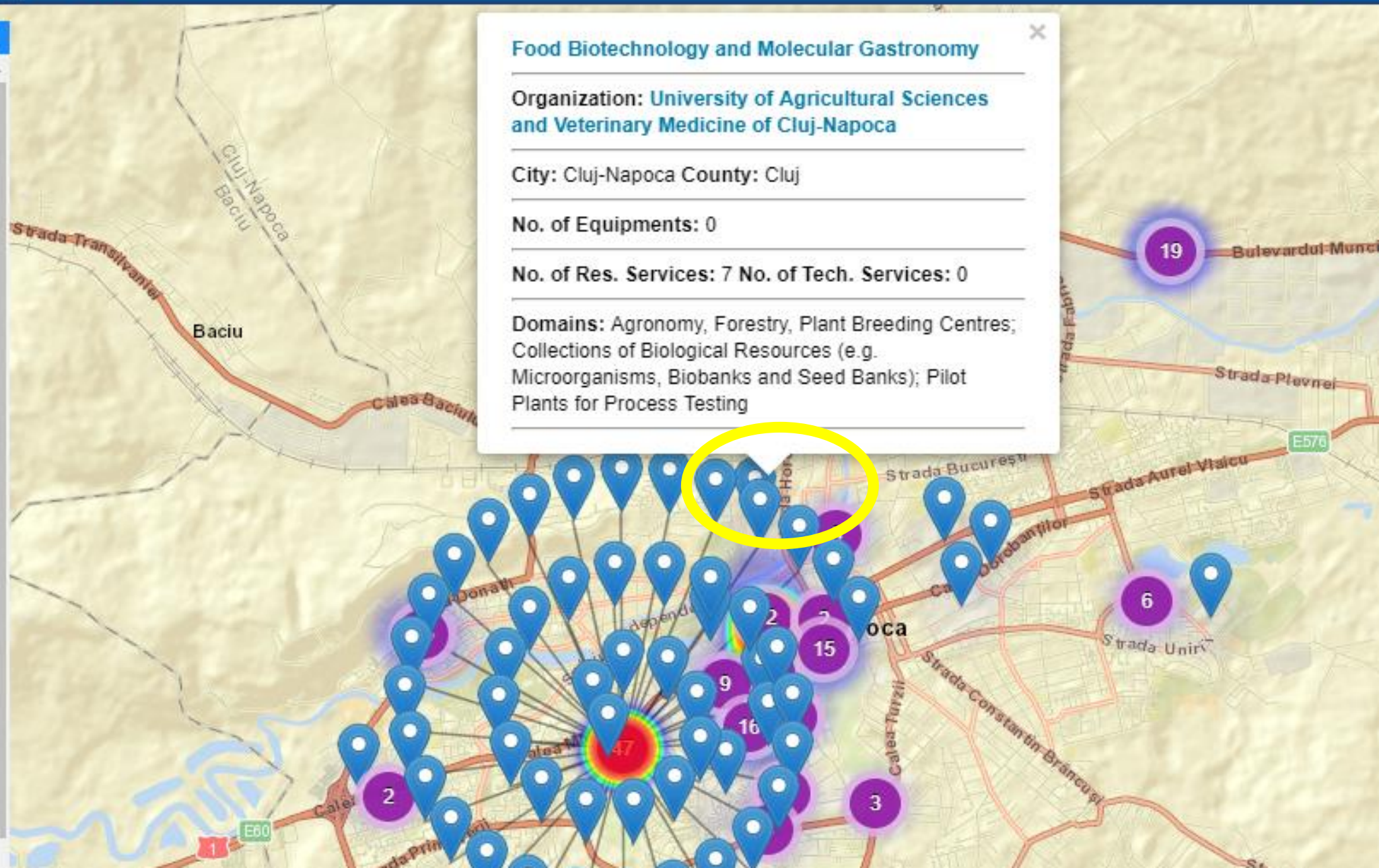
Infrastructure name:

Equipment name:

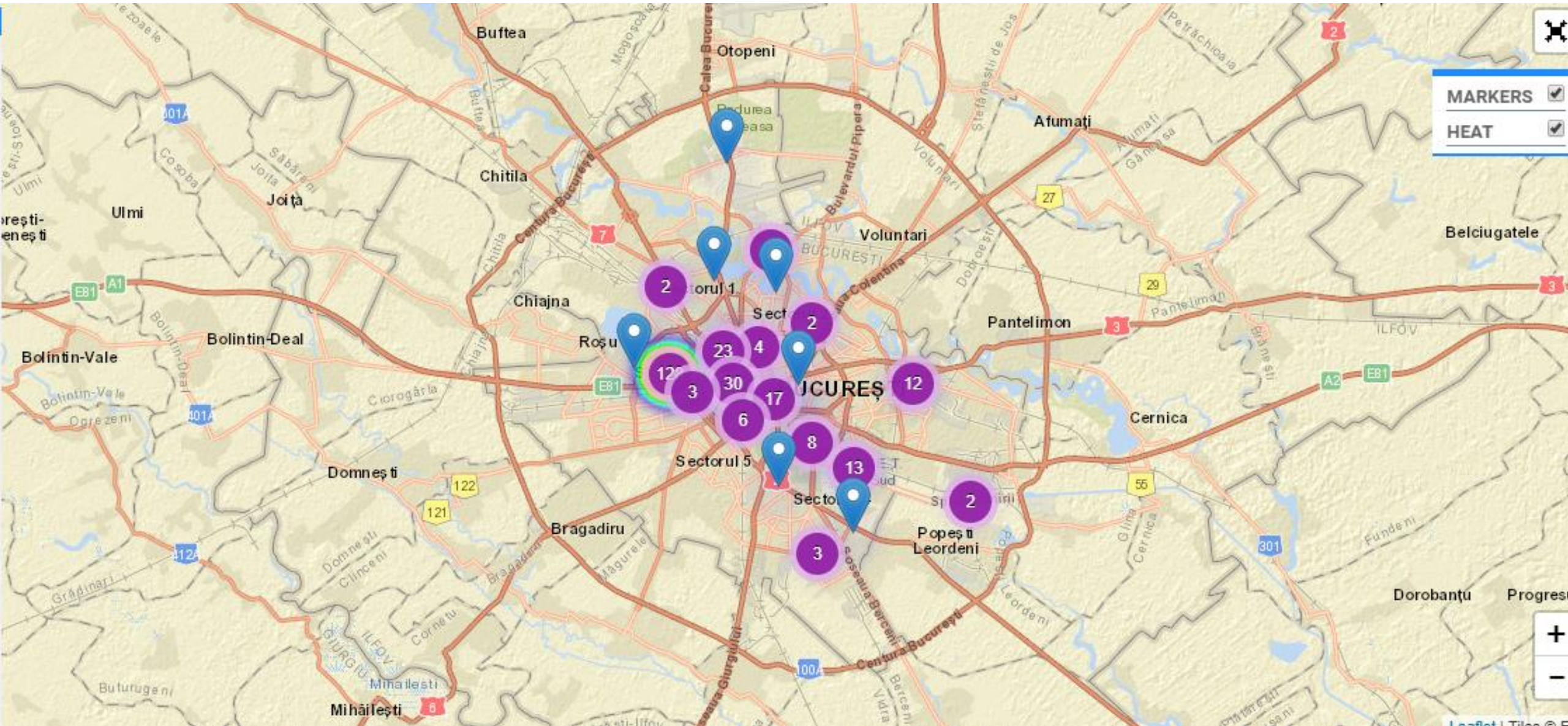
Research Service name:

Technological Service name:

SEARCH



București



Database and GIS Unit

Organization: **National Institute of Hydrology and Water Management**

City: Bucuresti County: Bucuresti - Sector 1

No. of Equipments: 8

No. of Res. Services: 2 No. of Tech. Services: 0

Domains: Earth, Ocean, Marine, Freshwater, and Atmosphere Data Centres; Web mapping and Geographical Information Systems data facilities; Environmental Management Infrastructures



Information updates every 15 minutes

Organization name:

County:

City:

Domain:

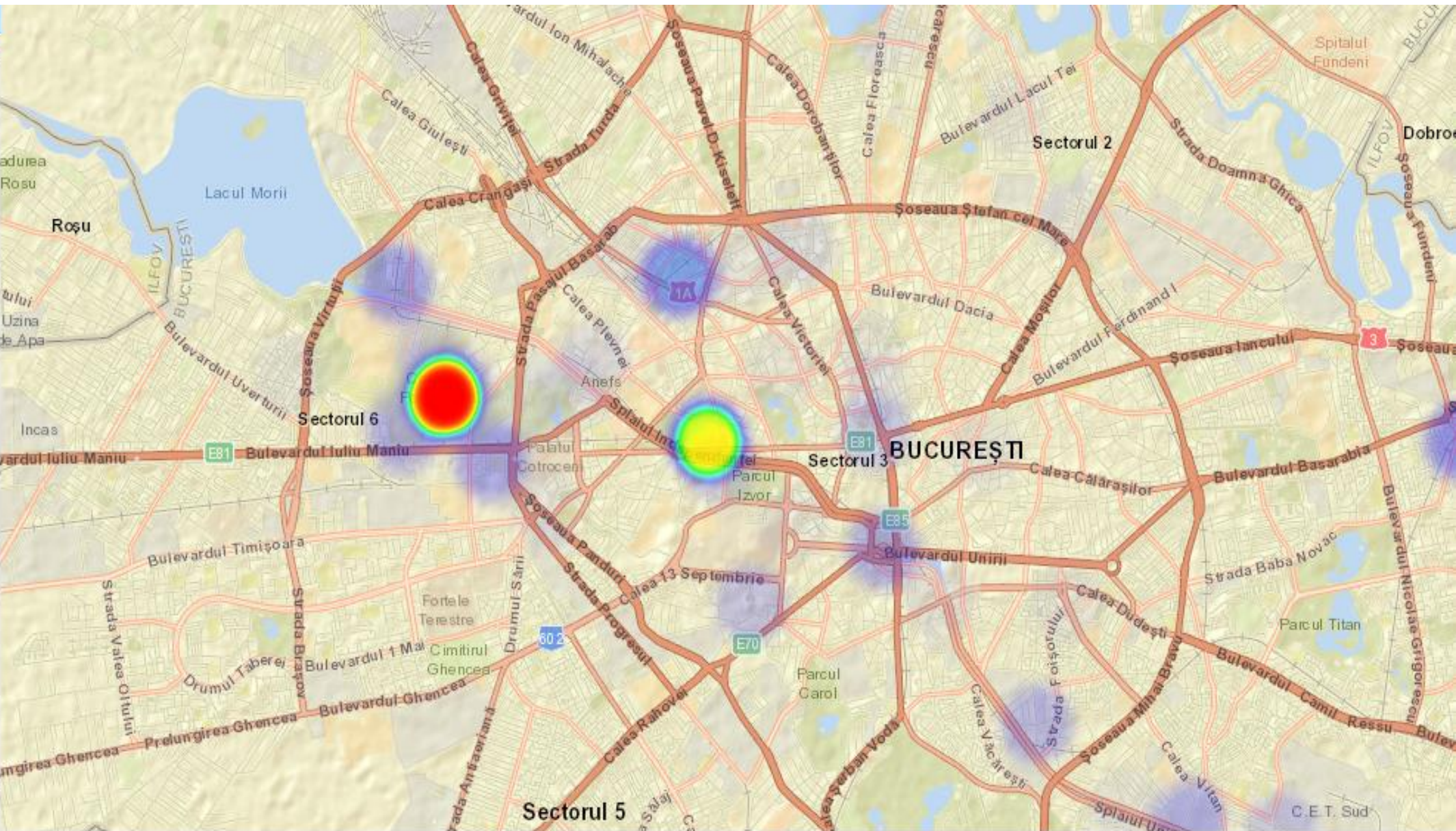
Infrastructure name:

Equipment name:

Research Service name:

Technological Service name:

SEARCH





Organization name:

County:

City:

Domain:

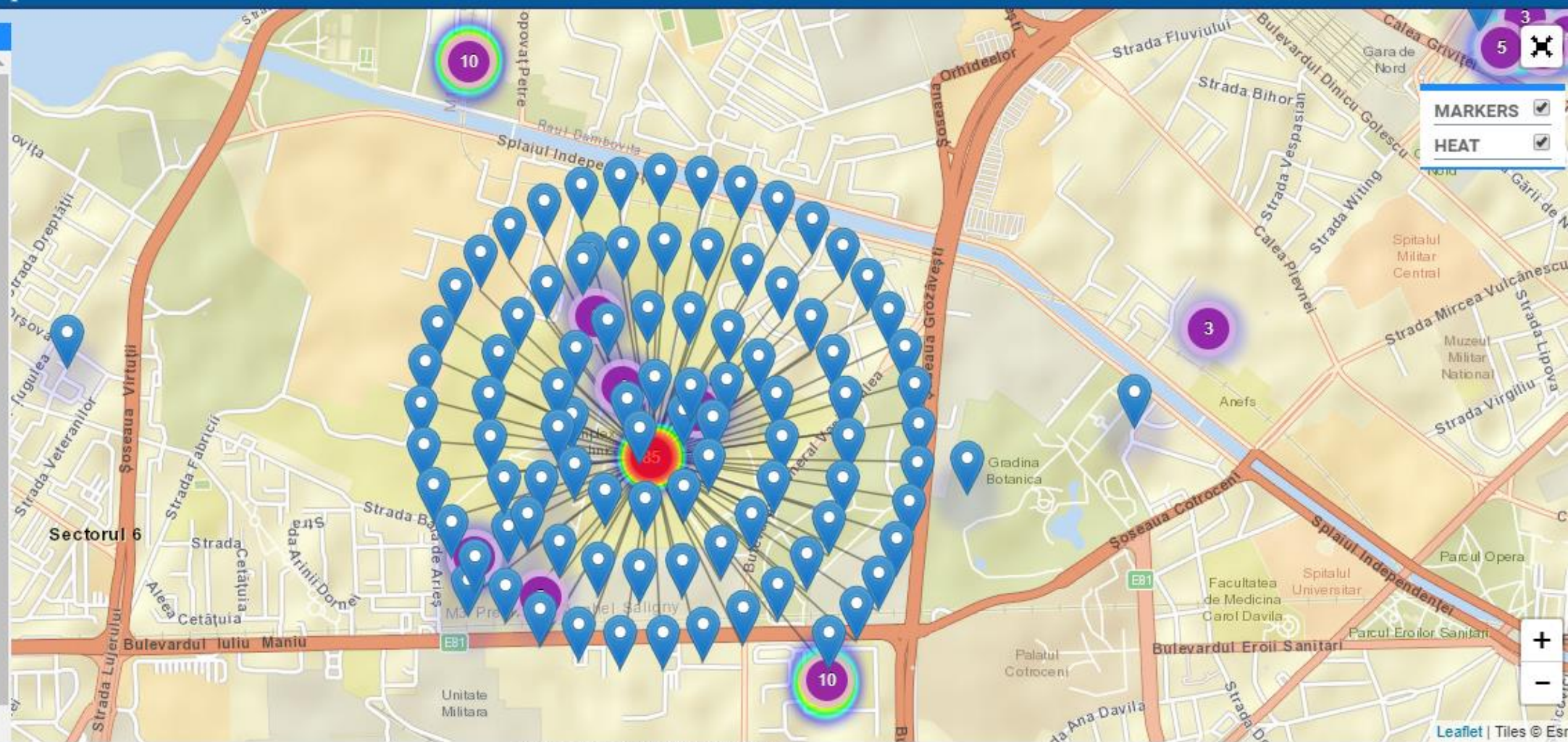
Infrastructure name:

Equipment name:

Research Service name:

Technological Service name:

SEARCH



5

MARKERS

HEAT

Information updates every 15 minutes

- <https://erris.gov.ro/index.php?&ddpN=1815232165&we=c5aebo05a67e6ff03884776f2of910e6&wf=dGFCall&wtok=5a44c9c8a6e8ef8d62b5dc38d414108595322835&wtkps=NY5RCsMgEETv4n+CutrQzWGKVJtaFQ2bkpLSu3ct9GcZHsObdWjxTXzEvqVMYo6oACY4qZkQUFDooqczCgoG7ENmbZReZFoppJugmroOe3rVQw22oBFUr2vWhR4Uiov1zxxG19p4r+WH2ZYjbZfmltAnJbPpz/gJjxbmzxc=&wchk=4ed64975304de88a2f8b78b77cb85fa5899936f9>

Furnizor de servicii

REGISTRATION INFORMATION

Is your organization not yet in ERRIS? You can create an account by following a few simple steps:

- You must be appointed by the representative of your organization as an institutional account administrator.
- Once you get the appointment, you can fill in the mandatory fields.

INSTITUTION REGISTRATION

Institution Name in English: (Required)

Fiscal code: (Required)

Name of account owner (Required)

Last Name:

First Name:

Institutional E-mail address (Required)

I hereby confirm that I am appointed as institutional account administrator and I am liable for the information provided within the platform regarding the institution I represent.

After submitting the registration, you will receive within 3 working days an email with the credentials as administrator.

Rights and obligations of the organization admin account

531 organizații

7238 utilizatori
asociați org./inst.



UNIVERSITY POLITEHNICA OF BUCHAREST

UNIVERSITATEA POLITEHNICA DIN BUCURESTI

University POLITEHNICA of Bucharest - UPB represents the largest technical university from Romania, and among the biggest in South-Eastern Europe, having a history over 180 years and an excellent tradition in education and scientific research. With the benefit of a highly functioning autonomy, a number of 40 Research Centres run the majority of scientific research activities, separately from the administrative structure. A national recognition of the professional competence is given by the fact ... [\[view more\]](#)



Organisation direct public link in ERRIS: <https://erris.gov.ro/UNIVERSITATEA-POLITEHNICA-DI>

RECTOR / GENERAL DIRECTOR:



Rector
Mihnea COSTOIU

CONTACT:

Website: www.upb.ro

Email: relatii_publice@upb.ro

Phone: + 4021-402 94 65

Zip code: 060042

Address: Splaiul Independentei , 313,
 Bucuresti Bucuresti - Sector 6, ROMANIA



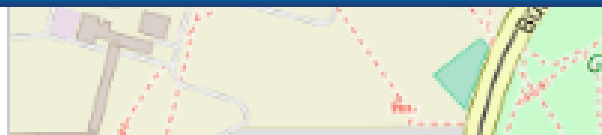
LOCATION OF INFRASTRUCTURES:



LIST OF INFRASTRUCTURES:

1. CSSNT-UPB

2. OPTIMUM-UPB



LIST OF INFRASTRUCTURES:

1. **CSSNT-UPB**
2. **OPTIMUM - UPB**
3. **SRCTCSAT - UPB --- Scientific Research and Continuous Training Center for Sustainable Automotive Technologies --- University POLITEHNICA of Bucharest**
4. **Equipment for Electromechanical Conversion of Energy Research Center ECEE - UPB**
5. **CNMN - UPB - National Research Center for Micro and Nanomaterials, Dept. of Science and Engineering of Oxide Materials and Nanomaterials, Faculty of Applied Chemistry and Materials Science, University Politehnica from Bucharest**
6. **UPB-CASM-SIMONa - University Politehnica from Bucharest, Faculty of Applied Chemistry and Materials Science, Department of Oxide materials and nanomaterials**
7. **CNpSA-UPB - National Research Center for Food Safety, University POLITEHNICA from Bucharest**
8. **Research and Development Center for Mechatronics (UPB - CCDM)**
9. **Laboratory of Technical Magnetism - LTM-UPB**
10. **Communications and Signal Processing Research Centre (3CPS - UPB), Faculty of Electronics, Telecommunications and Information Technology**
11. **UPB - LABORATORY FOR INNOVATIVE PRODUCTS AND PROCESSES (LP&PI-UPB)**
12. **LBioIng - UPB**
13. **Advanced Polymer Materials Group**
14. **Macromolecular compounds chemistry and polymer nanocomposites laboratory - NanoPol Lab - UPB**
15. **ULTRA-MINT Technologies - UPB**
16. **CCMA - UPB RESEARCH CENTER FOR APPLIED MECHANICS**

How to fill in your ERRIS account?

- https://www.youtube.com/watch?time_continue=87&v=l5Jpnz2653l

HORIA HULUBEI NATIONAL INSTITUTE FOR PHYSICS AND NUCLEAR ENGINEERING IFIN-HH

INSTITUTUL NATIONAL DE CERCETARE - DEZVOLTARE PENTRU FIZICA SI INGINERIE NUCLEARA
" HORIA HULUBEI " - **IFIN** - HH

Research and development activities in fundamental and applied research in Nuclear Physics and related areas



Organisation direct public link in **ERRIS**: <https://erris.gov.ro/INSTITUTUL-NATIONAL-DE-CERCE-2>

Solicitare
servicii

RECTOR / GENERAL DIRECTOR:



CONTACT:

Website: <http://www.ifin.ro/>

Email: dirgen@nipne.ro

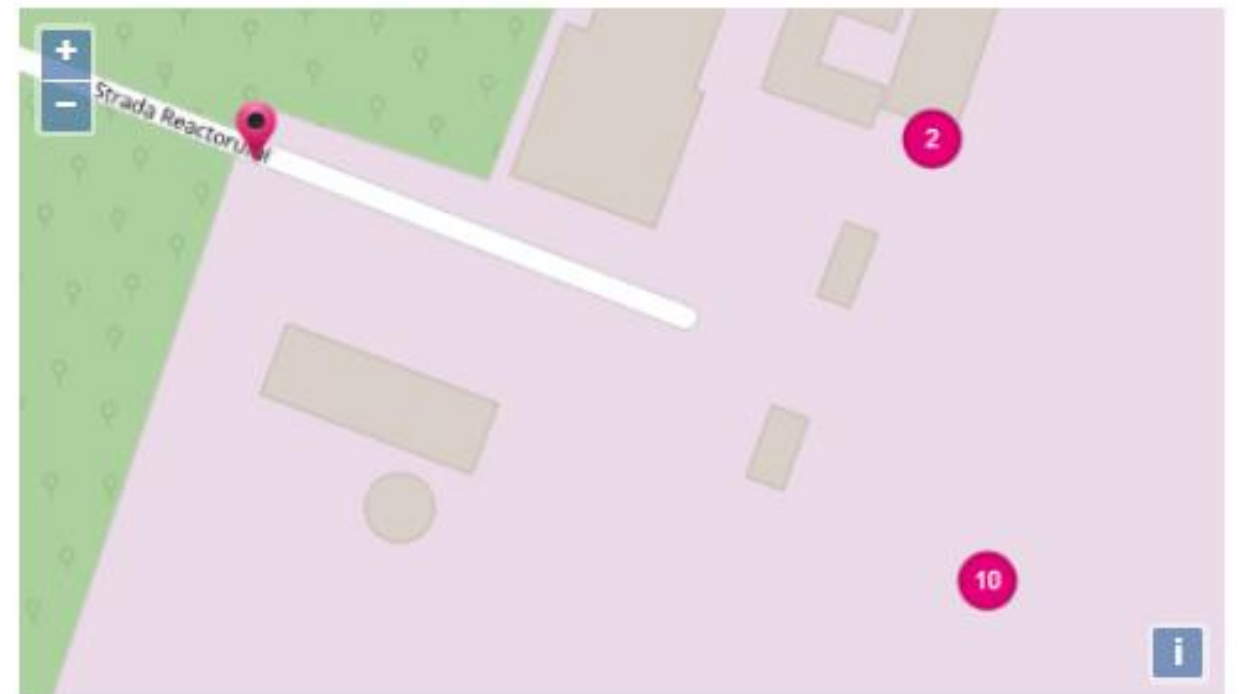
Phone: +40214042301

Zip code: 077125

Address: Reactorului, 30, Magurele Ilfov,
ROMANIA



LOCATION OF INFRASTRUCTURES:

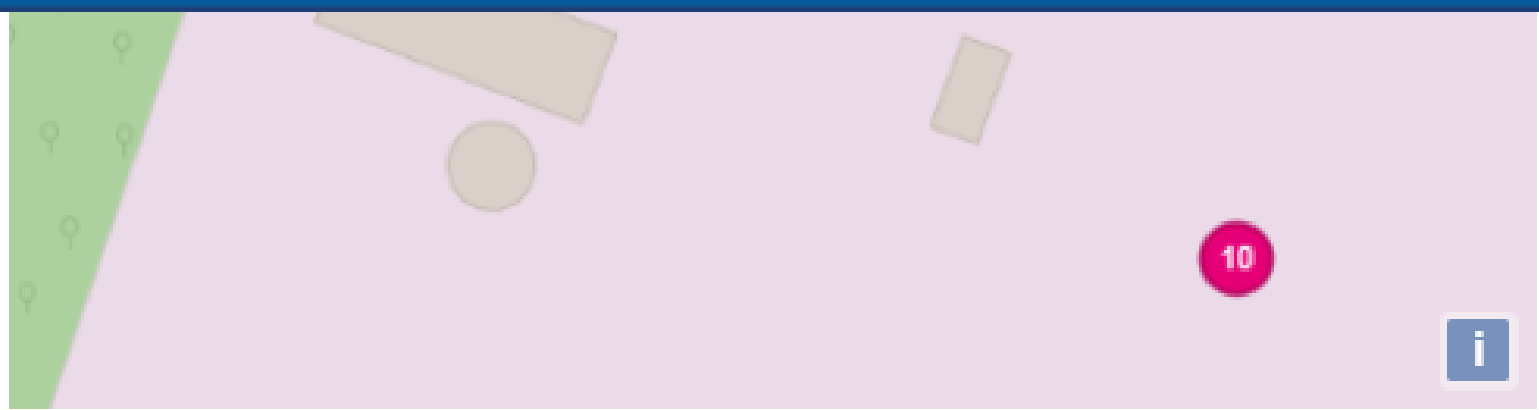
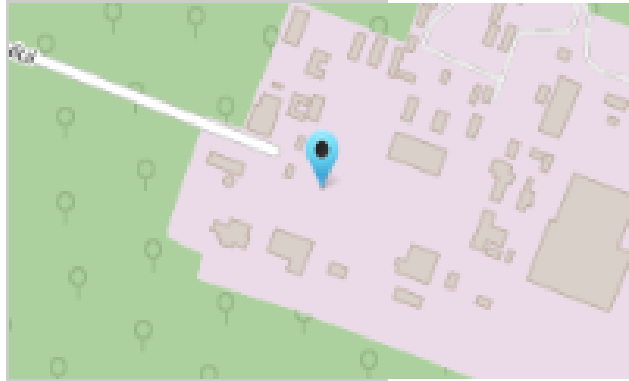


Email: dirgen@nipne.ro

Phone: +40214042301

Zip code: 077125

Address: Reactorului, 30, Magurele Ilfov,
ROMANIA



LIST OF INFRASTRUCTURES:

1. IRASIM - Radioisotope Processing Center of the Horia Hulubei National Institute of Physics and Nuclear Engineering
2. Tandem Accelerators Complex
3. Radiopharmaceuticals Research Centre
4. Radioactive Waste Treatment Plant
5. National Repository for Low and Intermediate Level Wastes Baita - Bihor
6. TRITIULAB
7. CEXMECDIF
8. ROSPHERE
9. IFIN GRID - Grid Computing System for Research in Physics and Related Areas
10. MicroBequerel Laboratory
11. CLSRMA - Centru Local de Supraveghere Radiologica a Mediului Ambient (LCRSE - Local Centre for Radiological Surveillance of the Environment)
12. BIOEVAL - Laboratory for biocompatibility evaluation of medical materials and devices
13. Molecular Biology and Single Molecule Biophysics LAB in DFVM



Tandem Accelerators Complex

[HORIA HULUBEI NATIONAL INSTITUTE FOR PHYSICS AND NUCLEAR ENGINEERING IFIN-HH](#)

The infrastructure consists of three tandem type particle accelerators along with their state-of-the-art research infrastructure. The 9 MV Tandem accelerator was installed in 1973 in IFIN-HH and was completely upgraded starting with 2006. The physics done at this facility is mainly nuclear physics.

The 3 MV Tandetron accelerator which was installed in 2012 is mainly used for applied physics, including ion beam analysis studies for material science, environmental science and any other field which needs precise elemental identification. The machine is also used for precise ion implantation.

The 1 MV Tandetron accelerator is the most specialised systems in the infrastructure, allowing the high precision determination of isotopic ratios with application in radiocarbon dating, geology, nuclear forensic pharmacology, environmental studies and any other field that needs precise measurement of isotopic ratios.

Domains of activity

- Nuclear Research Facilities
- Materials Synthesis or Testing Facilities
- Research facilities for cultural heritage

Infrastructure direct public link in ERRIS: <https://erris.gov.ro/Tandem-Accelerators-Complex>

594
VISITS

0
REVIEW(S)



SCIENTIFIC & TECHNICAL TEAM:



Coordinator:
Dr.
Tiberiu Bogdan SAVA



RESEARCH SERVICES:

- Nuclear physics experiments
- IBA - Ion Beam Analysis
- Ion implantation
- Radiocarbon dating
- Other isotopic ratio measurements

CONTACT:

Phone: 40214042321
Fax: 214574441
Zip code: 077125
Address: Reactorului, 30, Magurele
Ilfov, ROMANIA



EQUIPMENTS:

- 9 MV Pelletron Tandem Accelerator
- 3 MV Tandetron Accelerator
- 1 MV Tandetron Accelerator

REVIEWS:



0% 0



0% 0



Tandem Accelerators Complex

HORIA HULUBEI NATIONAL INSTITUTE FOR PHYSICS AND NUCLEAR ENGINEERING IFIN-HH

The infrastructure consists of three tandem type particle accelerators along with their state-of-the-art research infrastructure. The 9 MV Tandem accelerator was installed in 1973 in IFIN-HH and was completely upgraded starting with 2006. The physics done at this facility is mainly nuclear physics. The 3 MV Tandetron accelerator which was installed in 2012 is mainly used for applied physics, including ion beam analysis studies for material science, environmental science and any other field which needs very precise elemental identification. The machine is also used for precise ion implantation.

Service Details

SERVICE NAME:

Ion implantation

SERVICE TYPE:

Research Service

SERVICE DESCRIPTION:

The 3 MV machine is fully equipped with ion implantation capabilities. The range of energies spans from 400 keV up to MeV, depending on the implanted ion specie. The accelerator is also capable in accelerating a very wide range of ions and the small energy resolution allows precisely implant the ions at a desired depth.

SERVICE PERSONS:

Tiberiu Sava



Mihai Straticiuc

SCIENT

**CONTACT:**

Phone: 40214042321

Fax: 214574441

Zip code: 077125

Address: Reactorului, 30, Magurele Ilfov, ROMANIA

**EQUIPMENTS:**

- [9 MV Pelletron Tandem Accelerator](#)
- [3 MV Tandetron Accelerator](#)
- [1 MV Tandetron Accelerator](#)

REVIEWS:

the hig
resnic
ratio



Tandem Accelerators Complex

HORIA HULUBEI NATIONAL INSTITUTE FOR PHYSICS AND NUCLEAR ENGINEERING IFIN-HH

The infrastructure consists of three tandem type particle accelerators along with their state-of-the-research infrastructure. The 9 MV Tandem accelerator was installed in 1973 in IFIN-HH and was completely upgraded starting with 2006. The physics done at this facility is mainly nuclear physics.

The 3 MV Tandetron accelerator which was installed in 2012 is mainly used for applied physics, including ion beam analysis studies for material science, environmental science and any other field which needs very precise elemental identification. The machine is also used for precise ion implantation.

Service Details

The 3 MV machine is fully equipped with ion implantation capabilities. The range of energies spans from 400 keV up to MeV, depending on the implanted ion specie. The accelerator is also capable in accelerating a very wide range of ions and the small energy resolution allows precisely implant the ions at a desired depth.

SERVICE PERSONS:



Tiberiu Sava



Mihai Straticiu



Daniel Vasile Moșu

[Request Access / Solicita Acces](#)

EQUIPMENTS:

- 9 MV Pelletron Tandem Accelerator
- 3 MV Tandetron Accelerator

CONTACT:

Phone: 40214042321

Materials Synthesis or Testing Facilities
Electrical and Optical Engineering Facilities
Renewable Energy

Infrastructure direct public link in ERRIS: <https://erris.gov.ro/CSSNT-UPB>

1097
VISITS

0
REVIEW(S)



Share 0



Share

Service Details



Evgenia Bogdan



Adrian Volceanov



Mariana Prodana



Adrian Katona

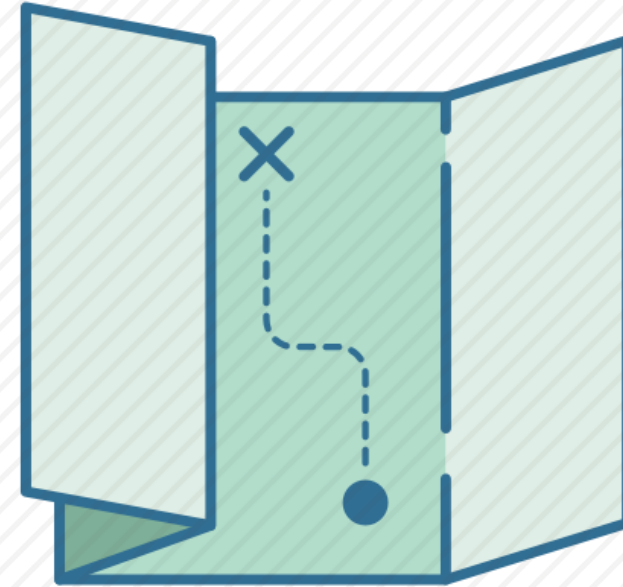
ACCESS THIS SERVICE:

You need to be logged in to request access to this service. [Login Here](#)

If you don't have an ERRIS account yet, please register [here](#)

EQUIPMENTS:

- Scanning Electron Microscope (SEM)-Scanning Transmission Electron Microscope (STEM) equipped with real time EDX (Energy Dispersive X ray) and electron diffraction analytical techniques
- Scanning Electron Microscope (SEM)-E-Beam Litography System (EBL) equipped with EDX (Energy Dispersive X ray)



În viitor:

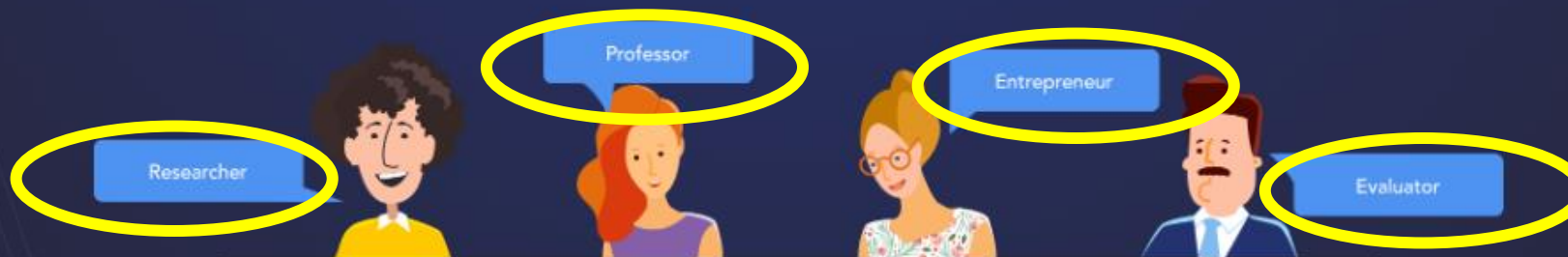
- Funcționalitate
- Technological services
- Ratings – sunt utile?

About Video

- <https://www.youtube.com/watch?v=w-TE1pGvOSo>

The online community of researchers, innovators and entrepreneurs

17.583 accounts



Search by work country, name, skills, institution...



We connect your expertise to Romania,
For your voice to matter

NEW

Explore by Skills



Explore by Map



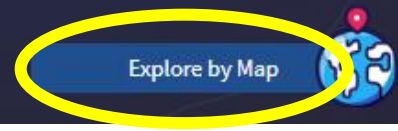
The online community of researchers, innovators and entrepreneurs

17.583 accounts



Search by work country, name, skills, institution... 

We connect your expertise to Romania,
For your voice to matter



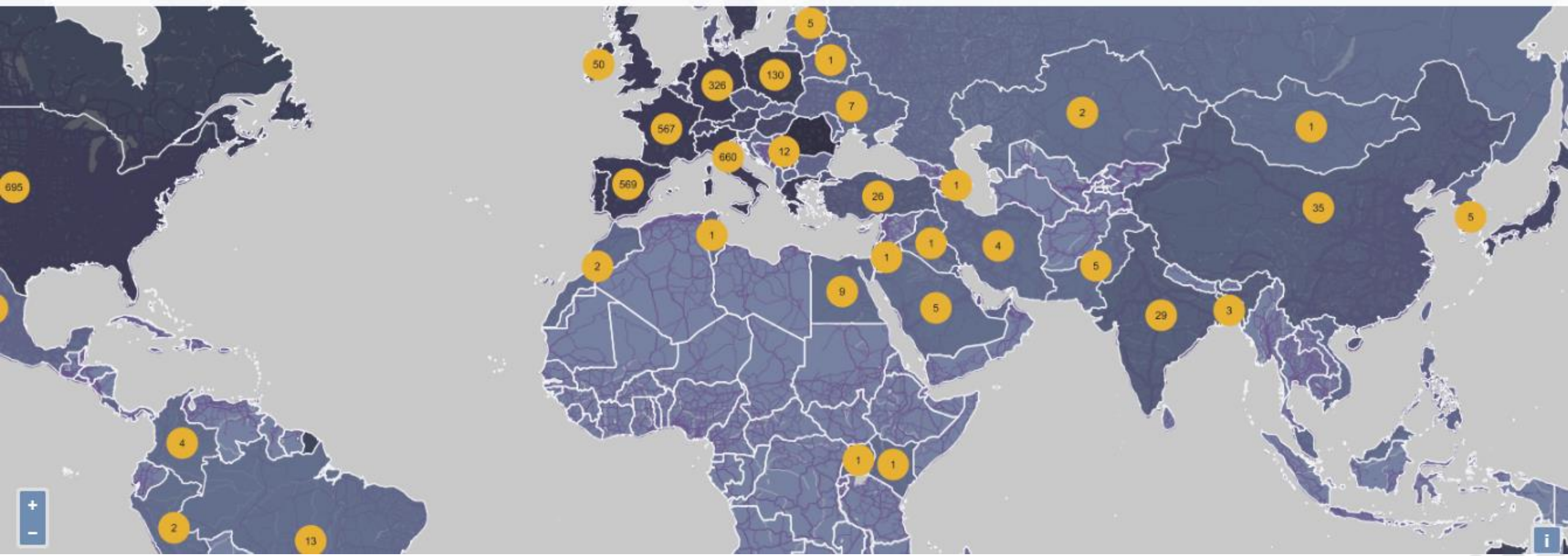
Worldwide experts connected to Romania

Search by work country, name, skills, institution...

16,896 accounts

Show accounts list Filter results on map

Advanced search options



Search by work country, name, skills, institution...

16,896 accounts

Show accounts list

Filter results on map

[Advanced search options](#)



Search results for X

	Emanuela - Alisa NICA UNIVERSITATEA "ATHENAEUM" DIN MUNICIPIUL BUCURESTI	View profile
	Monica TURTUREAN UNIVERSITATEA "ȘTEFAN CEL MARE" DIN SUCEAVA	View profile
	Irinel CASIAN-BOTEZ UNIVERSITATEA TEHNICĂ "GHEORGHE ASACHI" IAȘI	View profile
	Sergiu COSERI INSTITUTUL DE CHIMIE MACROMOLECULARA "PETRU PONI"	View profile
	Emil - Alexandru BRUJAN	View profile



Worldwide experts connected to Romania

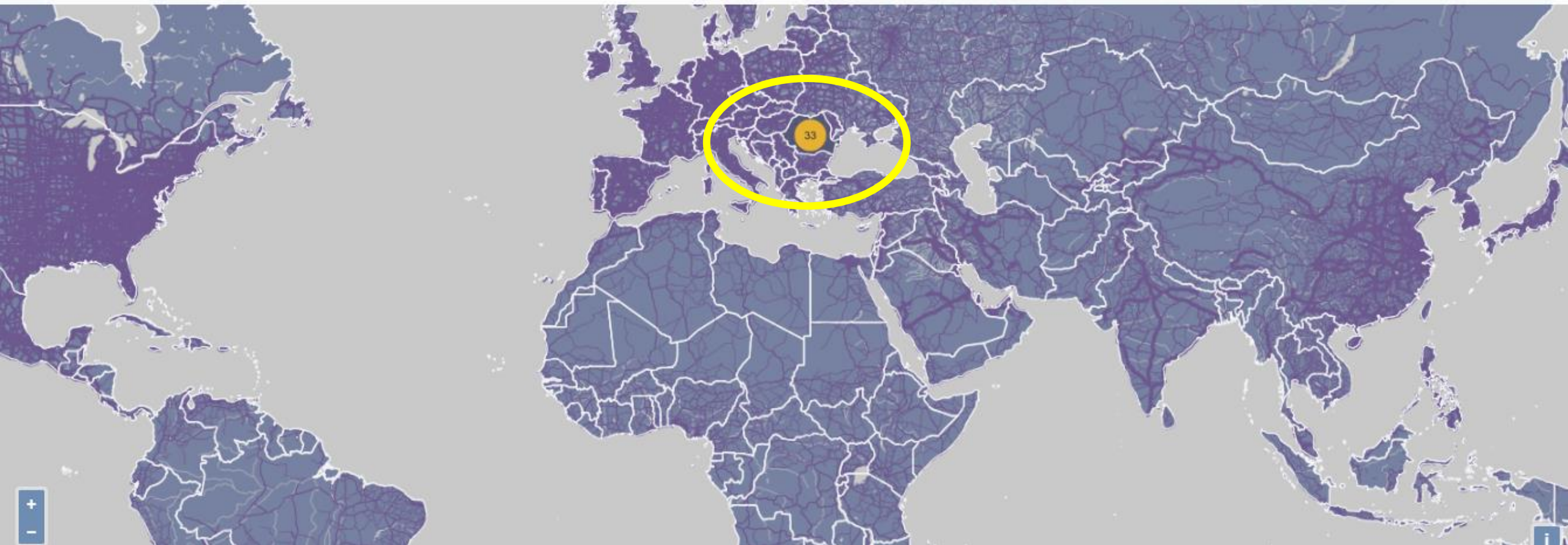
Școala Națională

33 accounts

Show accounts list

Filter results on map

[Advanced search options](#)



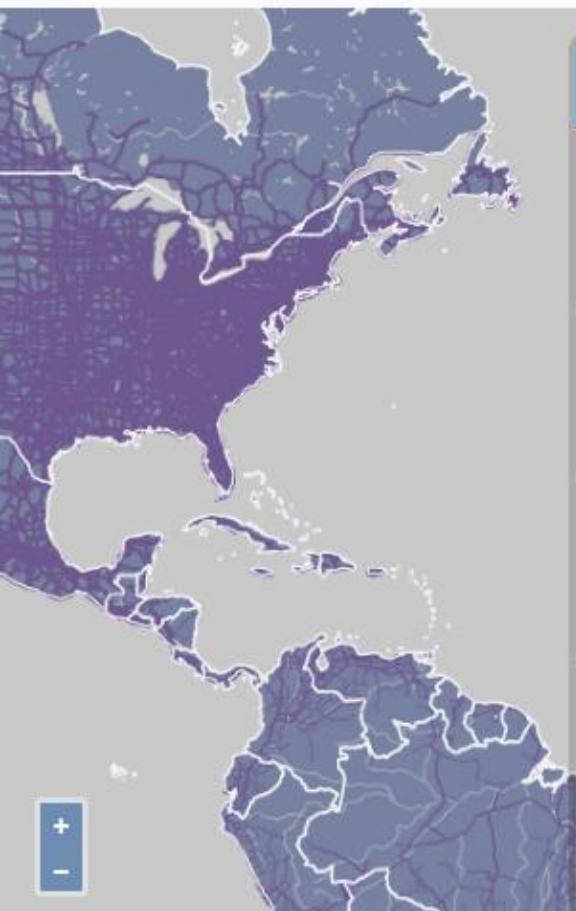
Școala Națională

33 accounts

Show accounts list

Filter results on map

[Advanced search options](#)



Search results for **Școala Națională** X

	Lucica MATEI SCOALA NATIONALA DE STUDII POLITICE SI ADMINISTRATIVE DIN BUCURESTI	View profile
	Marius VACARELU SCOALA NATIONALA DE STUDII POLITICE SI ADMINISTRATIVE	View profile
	Adelina DUMITRESCU PECULEA SCOALA NATIONALA DE STUDII POLITICE SI ADMINISTRATIVE	View profile
	Marian - Gabriel HANCEAN SCOALA NATIONALA DE STUDII POLITICE SI ADMINISTRATIVE DIN BUCURESTI	View profile
	Emil BALAN	View profile



The online community of researchers, innovators and entrepreneurs

17.583 accounts

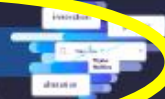


Search by work country, name, skills, institution...



We connect your expertise to Romania,
For your voice to matter

NEW Explore by Skills



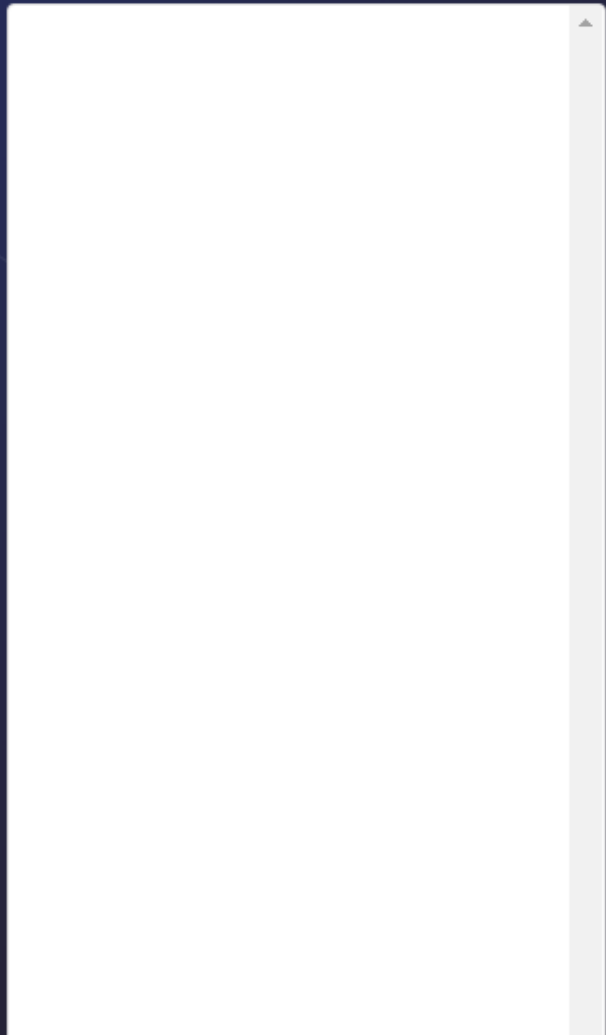
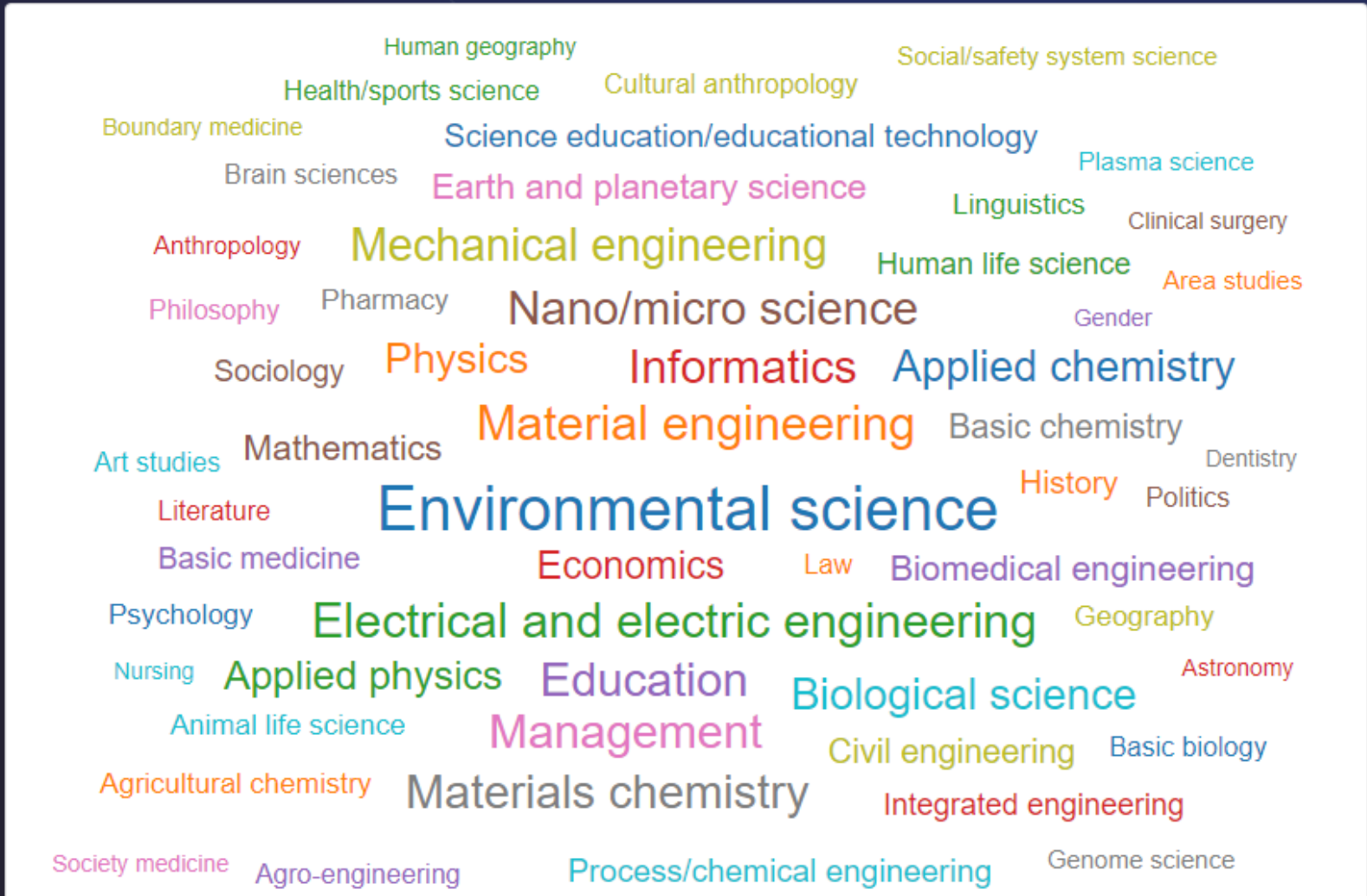
Explore by Map



Domains

Selected:

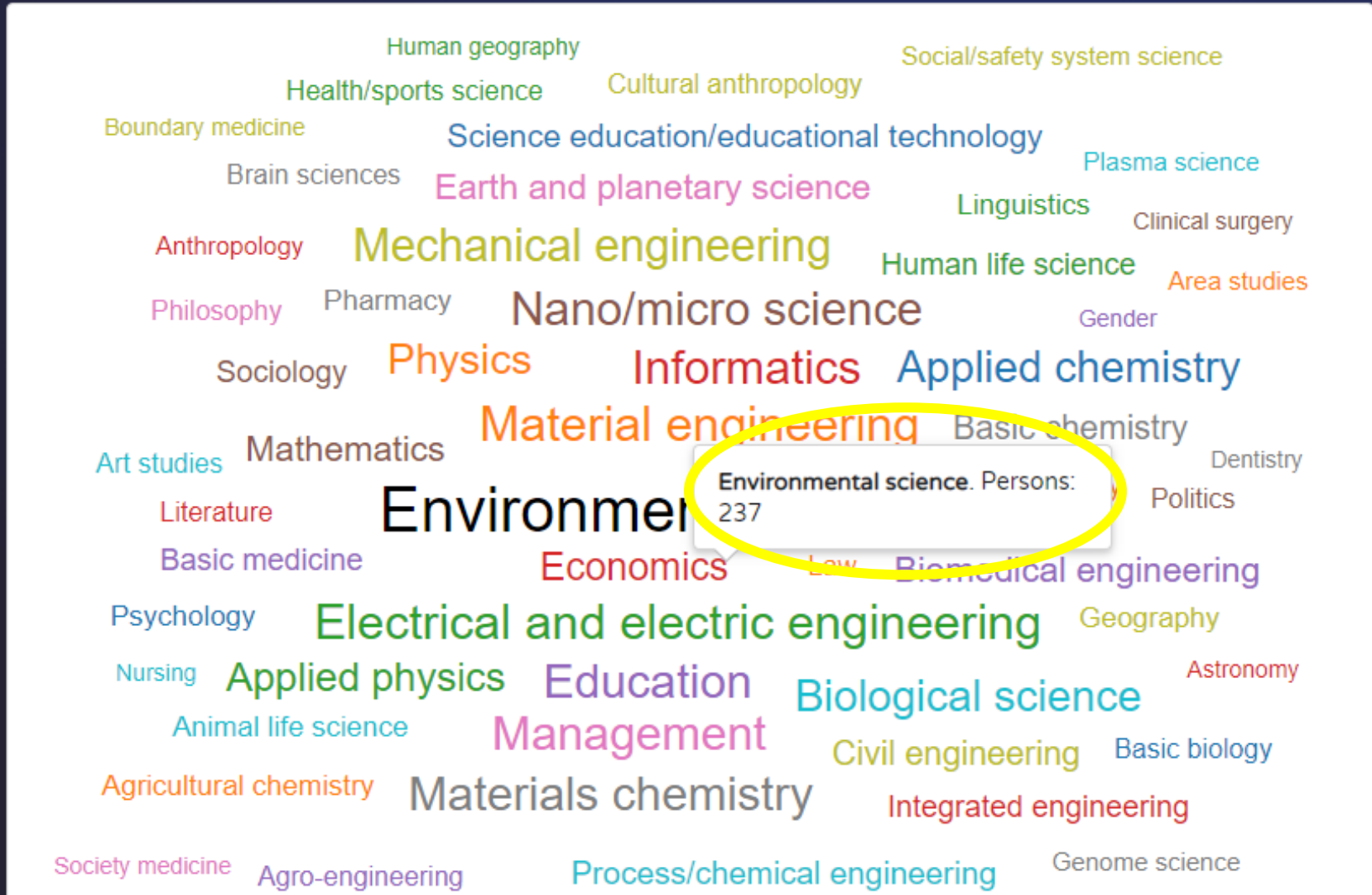
Persons



Domains

Selected:

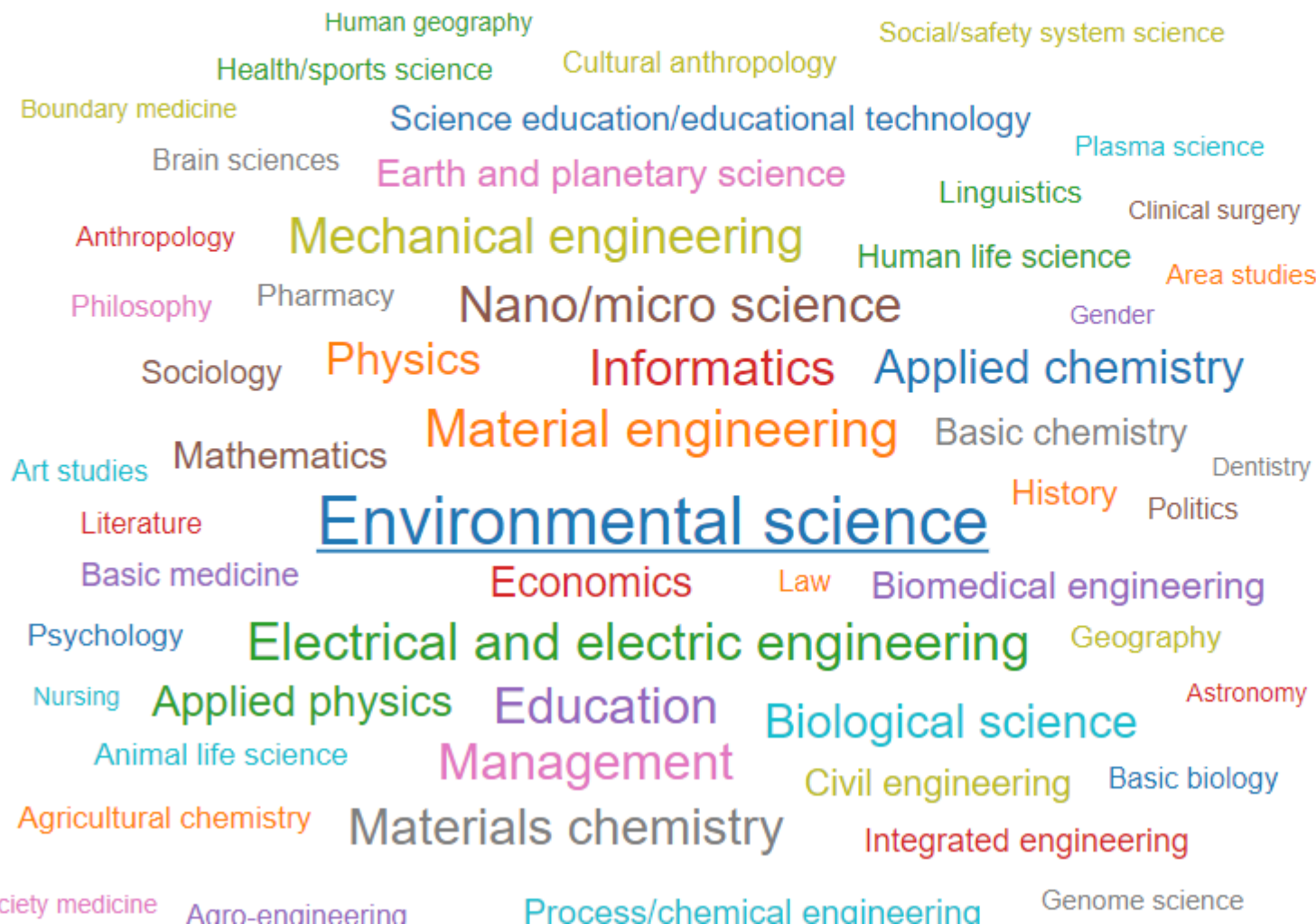
Persons



Domains

Selected: Environmental science

Persons



Expert

-  Valeria Abaza
-  Mariana Adam
-  Alina Agafitei
-  Luminita Andronic
-  Blanca Antizar-Ladislao
-  Magdalena Ardelean
-  Luminita Gabriela Atudorei
-  Lidia Lenuta Balan
-  Karina Paula Battes
-  Klara Benedek
-  Iustina Boaja (Popescu)
-  Victor Bocos-Bintintan
-  Florian Paul Bodescu
-  Elza Bontempi
-  Jonathan W. Bridge

Selected: Environmental science

Social/safety system science
ology
tional technology
nce
g
ience
ics Applied chemistry
ering Basic chemistry
science History Politics
Law Biomedical engineering
engineering Geography
Biological science Astronomy
Civil engineering Basic biology
Integrated engineering
al engineering Genome science

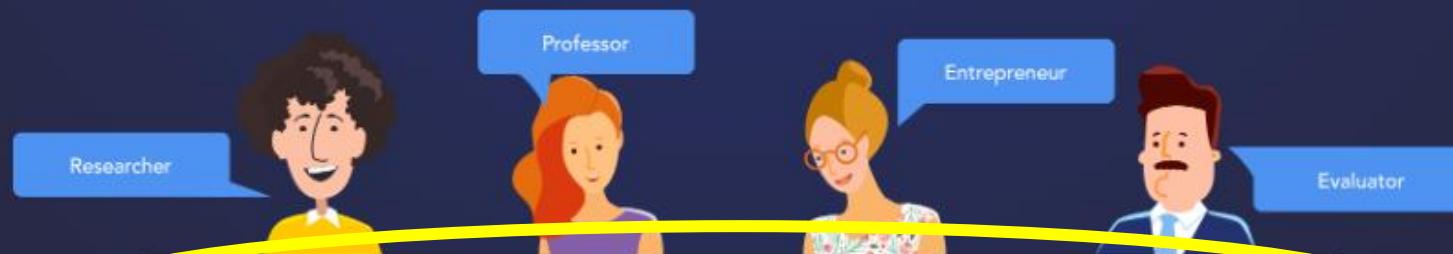
Person

- Marine ecology
- Aquatic crustacean ecology
- Macrozoobenthos
- Invertebrate ecology
- Marine environment

- Expe
- Valeria Abaza
 - Mariana Adam
 - Alina Agafitei
 - Luminita Andronic
 - Blanca Antizar-Ladislao
 - Magdalena Ardelean
 - Luminita Gabriela Atudorei
 - Lidia Lenuta Balan
 - Karina Paula Battes
 - Klara Benedek
 - Iustina Boaja (Popescu)
 - Victor Bocos-Bintintan
 - Florian Paul Bodescu
 - Elza Bontempi
 - Jonathan W. Bridge

The online community of researchers, innovators and entrepreneurs

17.583 accounts



Search by work country, name, skills, institution...

We connect your expertise to Romania,
For your voice to matter

NEW

Explore by Skills



Explore by Map





Search results for 'popescu'



SORINA POPESCU

UNIVERSITATEA DE STIINTE AGRICOLE SI
MEDICINA VETERINARA A BANATULUI "REGELE
MIRCEA BALE ROMANIEI" DIN TIMISOARA

[View profile](#)



Catalin POPESCU

UNIVERSITATEA PETROL GAZE PLOIESTI

[View profile](#)



DIANA POPESCU

UNIVERSITATEA POLITEHNICA DIN BUCURESTI

[View profile](#)



Violeta POPESCU (IONESCU)

UNIVERSITATEA TEHNICA DIN CLUJ - NAPOCA

[View profile](#)



Bogdan Ovidiu POPESCU

UNIV.DE MEDICINA SI FARMACIE - CAROL DAVILA

[View profile](#)



Alina POPESCU

Search results for 'nano'



IRINEL CASIAN-BOTEZ
UNIVERSITATEA TEHNICĂ "GHEORGHE ASACHI"
IAȘI

[View profile](#)

Sergiu COSERI
INSTITUTUL DE CHIMIE MACROMOLECULARA
"PETRU PONI"

[View profile](#)

Emil-Alexandru BRUJAN
UNIVERSITATEA POLITEHNICA DIN BUCURESTI

[View profile](#)

Catalin CROITORU
UNIVERSITATEA TRANSILVANIA BRASOV

[View profile](#)

Dana CRISTEA
INSTITUTUL NATIONAL DE CERCETARE-
DEZVOLTARE PENTRU MICROTEHNOLOGIE - IMT
BUCURESTI INCD

[View profile](#)

Robert IANOS
UNIVERSITATEA POLITEHNICA TIMIȘOARA

[View profile](#)

LUMINITA ANDRONIC
UNIVERSITATEA TRANSILVANIA BRASOV

[View profile](#)

Sandra A.V. EREMIA
INSTITUTUL NATIONAL DE CERCETARE
DEZVOLTARE PENTRU ȘTIINTE BIOLOGICE

[View profile](#)

politehnica

Search results for 'politehnica'



Emil-Alexandru BRUJAN

UNIVERSITATEA POLITEHNICA DIN BUCURESTI

[View profile](#)



Crisanta-Alina MAZILESCU

UNIVERSITATEA POLITEHNICA TIMIȘOARA

[View profile](#)



Robert IANOS

UNIVERSITATEA POLITEHNICA TIMIȘOARA

[View profile](#)



Gabriela Elena DUMITRAN

UNIVERSITATEA POLITEHNICA DIN BUCURESTI

[View profile](#)



Ion CINCA

UNIVERSITATEA POLITEHNICA DIN BUCURESTI

[View profile](#)



Stelian LUPU

UNIVERSITATEA POLITEHNICA DIN BUCURESTI

[View profile](#)



Andrea KELLENBERGER

UNIVERSITATEA POLITEHNICA TIMIȘOARA

[View profile](#)



Cristina STANCU

UNIVERSITATEA POLITEHNICA DIN BUCURESTI

[View profile](#)



Romania
Citizenship:
Ph.D. degree award:



Personal public profile share link.

Expertise & keywords

- Analytical chemistry
- Instrumental analysis
- Electrochemical sensor
- Electrochemical biosensors
- Chemically modified electrodes
- Modified electrode
- Conducting polymers
- Bio-Composites
- Metalic nanoparticles

Projects

Publications & Patents

Entrepreneurship

Reviewer section

Electrochemical micro-biosensors based on electrodes and their arrays modified with composite materials

PN-II-ID-PCE-2011-3-0271 2011 - 2016

Your role in this project: **Project coordinator**

Coordinating institution: **Universitatea POLITEHNICA din Bucuresti**

Project partners: **Universitatea POLITEHNICA din Bucuresti**

Your affiliation: **Universitatea POLITEHNICA din Bucuresti**

Project website: <http://www.microbiosens.ro>

Abstract:

The research project aims at developing new multi-analyte microbiosensors, amperometric and voltammetric biosensors, based on electrodes and their arrays modified with composite conducting polymers-enzymes materials. The specific objectives of the project are:

i) the elaboration of analytical procedures for the multi-analyte detection of biologically and environmentally important compounds

[Read more](#)

FILE DESCRIPTION

- List of research grants as project coordinator or partner team leader
- Significant R&D projects for enterprises, as project manager
- R&D activities in enterprises
- Peer-review activity for international programs/projects

DOCUMENT





[Redacted name]

Professor, MD, PhD

Professor - UNIV.DE [Redacted]



Romania
Citizenship: Romania
Ph.D. degree award: 2001

8 years

[Profile page share link.](#)

Curriculum Vitae (19/04/2016)

Expertise & keywords

- neurodegenerative diseases
- Alzheimer
- Parkinson
- neurogenesis
- neuroprotection
- neural plasticity

Projects

Publications & Patents

Entrepreneurship

Reviewer section

FILE DESCRIPTION

- List of research grants as project coordinator
- List of research grants as partner team leader
- List of research grants as project coordinator or partner team leader
- Significant R&D projects for enterprises, as project manager
- R&D activities in enterprises
- Peer-review activity for international programs/projects

DOCUMENT

- [Download \(14.54 kb\) 21/04/2016](#)
- [Download \(15.18 kb\) 21/04/2016](#)

uefiscadi





Romania
Citizenship: Romania
Ph.D. degree award: 2001



Professor, MD, PhD

Professor - UNIV.DE



8 years



Personal public profile share link.



Curriculum Vitae (19/04/2016)

Expertise & keywords

- neurodegenerative diseases
- Alzheimer
- Parkinson
- neurogenesis
- neuroprotection
- neural plasticity

Project

Publications & Patents

Entrepreneurship

Reviewer section

FILE DESCRIPTION

List of journal publications with journal Impact Factor for each publication
Granted patents, national and/or international
Hirsch Index (ISI)

DOCUMENT

18,00



Copyright © 2017 UEFISCDI

[Terms and Conditions](#)

[About Us](#)

[FAQ](#)

[Contact](#)





Romania
Citizenship: Romania
Ph.D. degree award: 2001

Professor, MD, PhD

Professor - UNIV.DE



8 years



Personal public profile share link.



Curriculum Vitae (19/04/2016)

Expertise & keywords

- neurodegenerative diseases
- Alzheimer
- Parkinson
- neurogenesis
- neuroprotection
- neural plasticity

Projects

Publications & Patents

Entrepreneurship

Reviewer section



Experience as research project coordinator



Experience as project evaluation expert

National RDI Strategy 2014-2020 Domains

HEALTH (including science of medicament)
Health (including science of medicament)

★ Expert

ERC Domains (2016)

LIFE SCIENCES

Neurosciences and Neural Disorders: Neurobiology, neuroanatomy, neurophysiology, neurochemistry, neuropharmacology, neuroimaging, systems neuroscience, neurological and psychiatric disorders

★ Expert



[Redacted text]

PhD.



UEFISCDI ID (UEF-ID):

[Redacted text]

Romania

Personal public profile share link.



Copyright © 2017 UEFISCDI [Terms and Conditions](#)

[About Us](#) [FAQ](#) [Contact](#)

NEW FEATURES



Add new projects

2018-04-04

You can now [Add New Projects](#) in your profile by filling in information in a more structured way so that you increase your visibility in the community and beyond.

Add your expertise

2018-02-05

You can now [add your key domains of expertise](#) and the associated keywords, so that you are easier identified by other users with similar interests.

Validate projects

2018-01-19

A new BrainMap feature enables you to find faster projects you might have been involved in. Check out the [Project](#) tab on your left side menu

Account Information



Customize your account information by adding your personal data, including email address, main affiliations, expertise & keywords.

[Home](#) | [Personal Information](#) | [Expertise & Keywords](#) | [Change Password](#) | [My Public Profile](#)

Professional Record



Showcase your professional background by adding the research projects you have been involved in, your publications and patents, or entrepreneurial activity.

[Research - Projects](#) | [Research - Publications & Patents](#)

Reviewer Section



If you wish to be considered for selection as a reviewer of publicly funded research and innovation projects, fill in your peer-review activity and project evaluator experience.

[Reviewer Profile](#) | [Reviewer Expertise](#)

Application forms

ROMANIAN CITIZENSHIP



Fill in, if you are a Romanian citizen and wish to apply for an open position in an administrative council for research or education.

Account Information



Customize your account information by adding your personal data, including email address, main affiliations, expertise & keywords.

[Home](#)

[Personal Information](#)

[Expertise & Keywords](#)

[Change Password](#)

[My Public Profile](#)

Professional Record



Showcase your professional background by adding the research projects you have been involved in, your publications and patents, or entrepreneurial activity.

[Research - Projects](#)

[Research - Publications & Patents](#)

Reviewer Section



If you wish to be considered for selection as a reviewer of publicly funded research and innovation projects, fill in your peer-review activity and project evaluator experience.

[Reviewer Profile](#)

[Reviewer Expertise](#)

Application forms

ROMANIAN CITIZENSHIP



Fill in, if you are a Romanian citizen and wish to apply for an open position in an administrative council for research or education.

[Cnspis Form \(2018\)](#)

Platform Updates

NEW FEATURES



View the latest platform updates

[View New Features](#)



PhD.



UEFISCDI ID (UEF-ID):



Personal public profile share link.

Account Information

Home

[Personal Information](#)[Expertise & Keywords](#)[Change Password](#)[My Public Profile](#)

Professional Record

[Research - Projects](#)[Research - Publications & Patents](#)

Reviewer Section

[Reviewer Profile](#)[Reviewer Expertise](#)

Application forms (RO Only)

Personal Information

Customize your account information by adding your personal data, including email address, affiliations, expertise and keywords.

[Personal Information](#)[Expertise & Keywords](#)[Change Password](#)

All mandatory fields are filled in. Personal Information Profile is up to date!

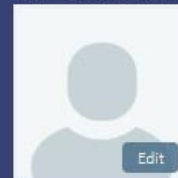
First Name*

Last Name*

Year of birth*

Private

Public profile picture



You can upload a new photo to use for your profile picture.
It should be a square picture, with at least 115px height and width.
Supported formats: png, jpg.

Citizenship*

Public

Romania

Personal web page or blog

Public

Personal Numerical Code*

Informație confidențială, câmp obligatoriu pentru cetățenii români

Skype identifier

Private, used only for panel audio/video meetings

Please enter your Skype ID

Email*

Private

Secondary e-mail address (optional)

Private

** use semicolon to separate multiple e-mail addresses.*

SAVE PROFILE INFORMATION

Updates and Announcements

View New Features



Copyright © 2017 UEFISCDI [Terms and Conditions](#)

[About Us](#) [FAQ](#) [Contact](#)

Title*

Public

Ms.

Year of your Ph.D. degree award*

If you do not have a PhD degree, select "Not applicable"

Public

2016

Curriculum Vitae*

You can upload your CV with the following filetypes format: .doc and .pdf

Public

Choose File No file chosen

Edit

Download CV (5120.84 kb) 21/03/2017

Scientific Title*

Public

PhD.

LinkedIn profile link

If available

Public

ORCID identifier

If available, eg: 0000-0000-0000-0001

Public

Please enter your ORCID ID



Main affiliation section (public)

Present/Last Affiliation Country*

Romania

Select Present/Last Institution Name*

Introduceți primele caractere din denumirea instituției și alegeți din lista predefinită sau selectați "+ Instituție Nouă" dacă nu o găsiți în listă. Pentru instituțiile noi vi se va solicita Codul Unic de Identificare Fiscală (CUI/CF)

Institution Name

Selected Present/Last Institution name

Present/Last Position*

E.g. Professor, Associate Professor, Assistant Professor, Researcher

Public

Institution web page

Or Laboratory, Faculty, Department webpage, if case

Public



Other Affiliation (optional, if case)

Affiliation Country*

[Select Country]

SAVE OTHER AFFILIATION DETAILS



Other Affiliation (optional, if case)

Affiliation Country*

[Select Country]

SAVE OTHER AFFILIATION DETAILS

ResearchGate profile link

if available

Public

[Redacted]

Google Scholar/Academic profile link

if available

Public

Please enter Google Scholar link

Experience as Researcher in full time equivalent years*

No. of years

Public

[Redacted]

Hirsch Index (ISI)*

Not applicable

Public

0

SAVE PROFILE INFORMATION



Personal Information

Customize your account information by adding your personal data, including email address, affiliations, expertise and keywords.

Personal Information

Expertise & Keywords

Change Password

Expert in*

Select a domain and choose up to 5 keywords for it

[Select]

Good knowledge in*

Select a domain and choose up to 5 keywords for it

[Select]

Knowledge in*

Select a domain and choose up to 5 keywords for it

[Select]

Older version of keywords*

evaluation

public policies

public programs

research infrastructures


research

education

Add new project

In this section you may find research projects financed through public funds which we have identified as being related to you. To publish them in your profile, just verify and confirm the information listed below (if any).

[Confirm projects](#) [Add new project](#) [View projects list](#)

 No projects to confirm at this moment

Add new project

Start adding your past or ongoing projects

[Confirm projects](#) [Add new project](#) [View projects list](#)

Project Title* (in English)

Project Title (in the original language, if different than English)

Project Acronym

[Next Step](#)

* Mandatory fields



Publications and Patents

publications & patents

Granted patents, national and/or international (max. 10)*

Not applicable

Public

No file chosen

Browse



List of publications (articles, books, chapters, studies)*

Not applicable

Public

No file chosen

Browse



SAVE PROFILE INFORMATION

Secțiune Reviewer/ Evaluator



Reviewer Section

If you wish to be considered for selection as a reviewer of publicly funded research and innovation projects, fill in your peer-review activity and project evaluator experience.

Reviewer Profile

Reviewer Expertise

! Reviewer profile is not up to date:

! You have to select if you want to be a reviewer for UEFISCDI and other agencies

You have to select at least 1 full set of domain/subdomain in [Reviewer Expertise](#) section

Please upload your **List of research grants as project coordinator or partner team leader (NEW)** or check not applicable

Please upload your **List of journal publications** or check not applicable

Please upload your **List of significant R&D projects for enterprises** or check not applicable

Please upload your **List of peer-review activity**

Nu ati incarcata declaratia pe proprie raspundere privind etica

Nu ati incarcata avizul institutiei referitor la calitatea de expert

Do you want to be a peer-reviewer for calls organized by UEFISCDI and other romanian agencies?*

Select

SAVE PROFILE INFORMATION

Experience as Coordinator/PI of national or international RDI projects?

Optional

Public

Yes

Experience as RDI Project Evaluator?

Optional

Public

Yes

Peer-review activity for international programs/projects including year and program*

[-] *Not applicable*

Public

No file chosen

Browse



List of research grants as project coordinator or partner team leader (national and international research grants)*

Not applicable

Public

No file chosen

Browse



Export from Project List section

SAVE PROFILE INFORMATION

Significant R&D activities in enterprises (max. 5)*

Not applicable

Public

No file chosen

Browse



Significant R&D projects for enterprises, as project manager (max. 10)*

Not applicable

Public

No file chosen

Browse



Experience in entrepreneurship*

Not applicable

Public

No file chosen

Browse



SAVE PROFILE INFORMATION

Granted patents, national and/or international (max. 10)*

Not applicable

Public



List of publications (articles, books, chapters, studies)*

Not applicable

Public



Publication and Patents files can be updated from [Research - Publications And Patents](#) section.



Zonă pentru utilizatori cu cetățenie română

Aveți experiență în evaluarea/realizarea de studii de fezabilitate?*

Selectați

Aveți experiență în evaluarea/realizarea de studii de impact?*

Selectați

Aveți experiență în evaluarea/realizarea de planuri de afaceri?*

Selectați

SAVE PROFILE INFORMATION



Documente necesare pentru calitatea de expert evaluator PNCDI III

Avizul instituției referitor la calitatea de expert* (solicitat prin [adresa MCI 343 SS/10.05.2017](#))

Not applicable

No file chosen

Browse



Declarație pe proprie răspundere privind etica și deontologia profesională* (descărcați [template](#))

Not applicable

No file chosen

Browse



SAVE PROFILE INFORMATION



Peer-review activity for UEFISCDI (if your account is sync with your UDiManager reviewer account)

* mandatory fields, either fill in/upload or check "not applicable" if case



Reviewer Section

If you wish to be considered for selection as a reviewer of publicly funded research and innovation projects, fill in your peer-review activity and project evaluator experience.

Reviewer Profile

Reviewer Expertise

UEFISCDI National RDI Strategy 2014-2020 Domains
RDI National Strategy 2014-2020 Domains

Edit Expertise

UEFISCDI ERC Domains (2016)
European Research Council Domains 2016

Edit Expertise

POC (MCI) Areas of economic-financial expertise
Areas of economic-financial expertise

Edit Expertise

Va multumesc,

Ioana Spanache

ioana.spanache@uefiscdi.ro