

# Enacting Change → Research Assessment Practices

Clifford Tatum  
CWTS - Leiden University

Rethinking Research Assessment Conference  
UEFISCDI - Bucharest , 14 November 2024

# GraspOS at a glance

GraspOS aims to support the emerging policy reforms and pave the way towards an **open science aware responsible research assessment** system

Core elements of GraspOS:

- Open Science Assessment Framework
  - Open and Federated Research Assessment Infrastructure
  - GraspOS pilots
  - GraspOS community of practice
- + CoARA OI4RRA working group

Budget: 2.985M

Start date: 1/1/2023

Duration: 36 months

# A multidisciplinary consortium

Infrastructure experts



RRA + OS experts



Communities



Consiglio Nazionale  
delle Ricerche



ALMA MATER STUDIORUM  
UNIVERSITÀ DI BOLOGNA



Federation of Finnish  
Learned Societies



UNIVERSITY OF  
EASTERN FINLAND



CSC



Faculty of Chemistry  
University of Belgrade



Utrecht  
University



TÜBİTAK

# GraspOS pilots

Countries



Research performing organizations



Disciplines



# Open Science Assessment Framework (OSAF)

## Coalition for Advancing Research Assessment (priority commitments + no.8)

- Recognise the **diversity of contributions** in accordance with the needs and nature of the research
- Base assessment **primarily on qualitative evaluation supported by quantitative indicators**
- Abandon inappropriate uses journal- and publication-based metrics, in particular (JIF) and h-index
- Avoid the use of rankings of research organisations in research assessment
- **Exchange practices and experiences to enable mutual learning** within and beyond the Coalition

## SCOPE Framework (principles)

- Evaluate only where necessary
- **Evaluate with the evaluated**
- Draw on evaluation expertise

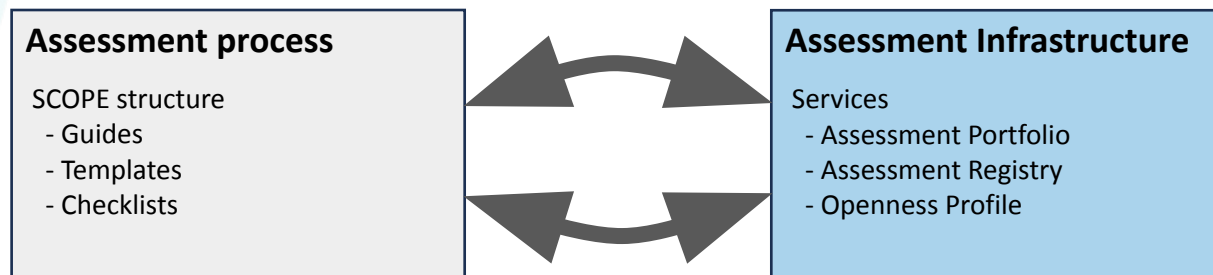
# Open Science Assessment Framework (OSAF)

- How to identify these diverse/qualitative contributions?
- Where to document/store them?
- Who to include in the process, and how?
- How and when to share for mutual learning and reuse?

# Qualitative inputs

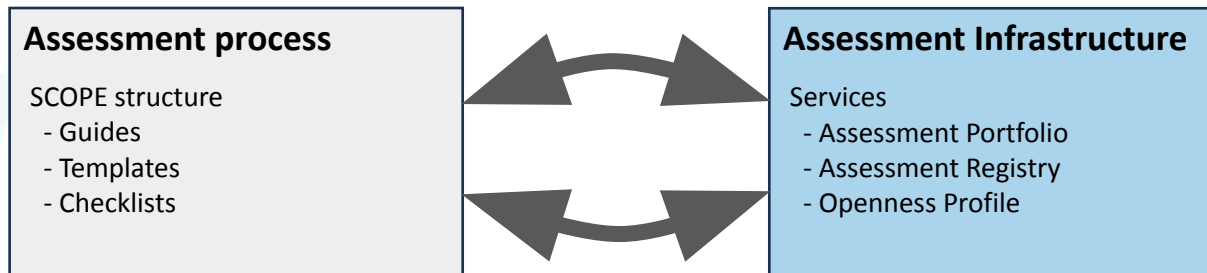
qualities	input
Values	Value statement (template)
Context	Contextual factors (template)
Purpose	Purpose statement (template)
Readiness	Infrastructure & culture change
Meaning	Narrative(s)
Peer review	Expert judgement

# Open Science Assessment Framework (OSAF)

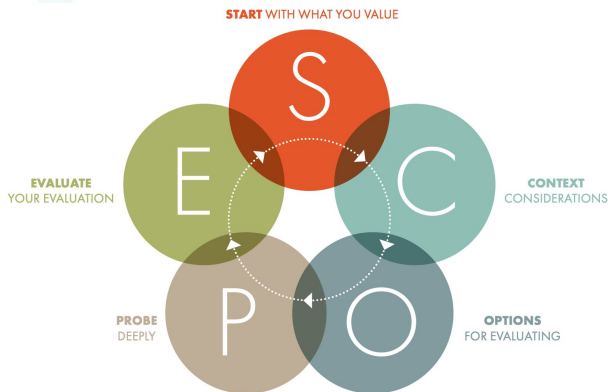




# Open Science Assessment Framework (OSAF)

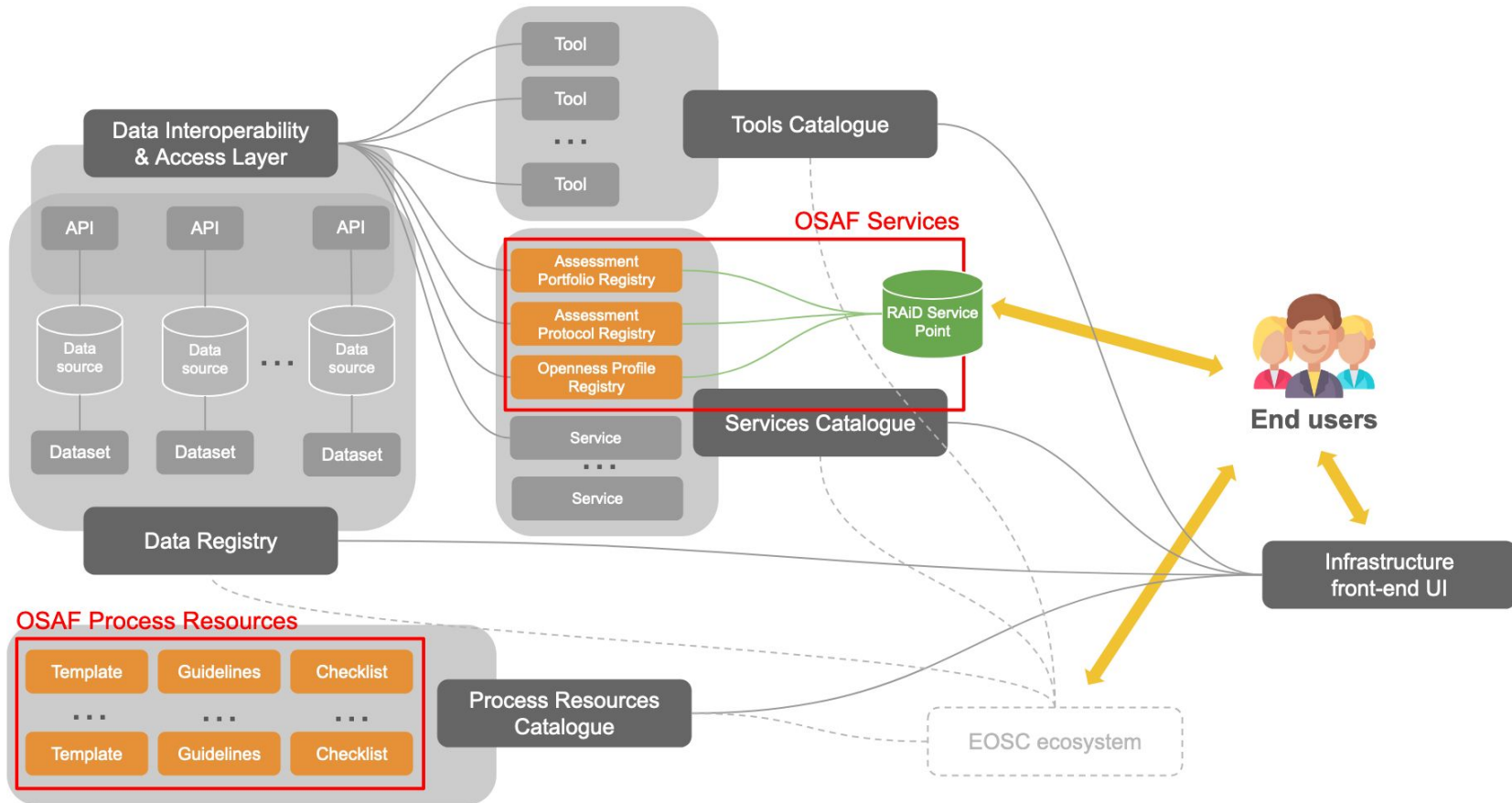


SCOPE



FAIRCORE4EOSC

# OSAF resources and services in the GraspOS infrastructure



# Key attributes, OSAF infrastructure

- collaborative and open to all assessment participants
- accommodates assessment documentation and content to be evaluated
- robust metadata schema and Application Programming Interface (API) enables
  - Interoperability: data exchange with CRISs & national platforms
  - Portability: Persistent Identifier + metadata record

# Openness Profile

**brainmap** Search for BrainMap users by work country, name, skills, ir

**Select Clifford TATUM**  
Researcher  
in   
UEFISCDI ID (UEF-ID):  
U-2300-068Y-9803  
Researcher  
Leiden University  
Netherlands  
SKILL TAG SKILL MAP  
RESEARCH OUTPUTS

**Openness profile**  
**Narrative**  
Lorem ipsum dolor sit amet, consectetur adipiscing elit, sed do eiusmod tempor incididunt ut labore et dolore magna aliqua...  
**Contributions**  
- Excepteur  
- Sint occaecat  
- Cupidatat  
- Non proident  
- Sunt in culpa

**Community updates**  
**Latest Open-Science events**  
[Rethinking Research Assessment Conference](#)  
[Romania National Roadshow](#)  
[Adunarea Generală RO-NOSCI](#)  
**Latest Open-Science topics**  
[Citizen Science](#)  
[Open Access \(OA\)](#)  
[Data Management Plan \(DMP\)](#)

**Account Information**  
Customize your account information by adding your keywords.  
Account Home Personal Information Ex...  
Newsletter Options My Public Profile

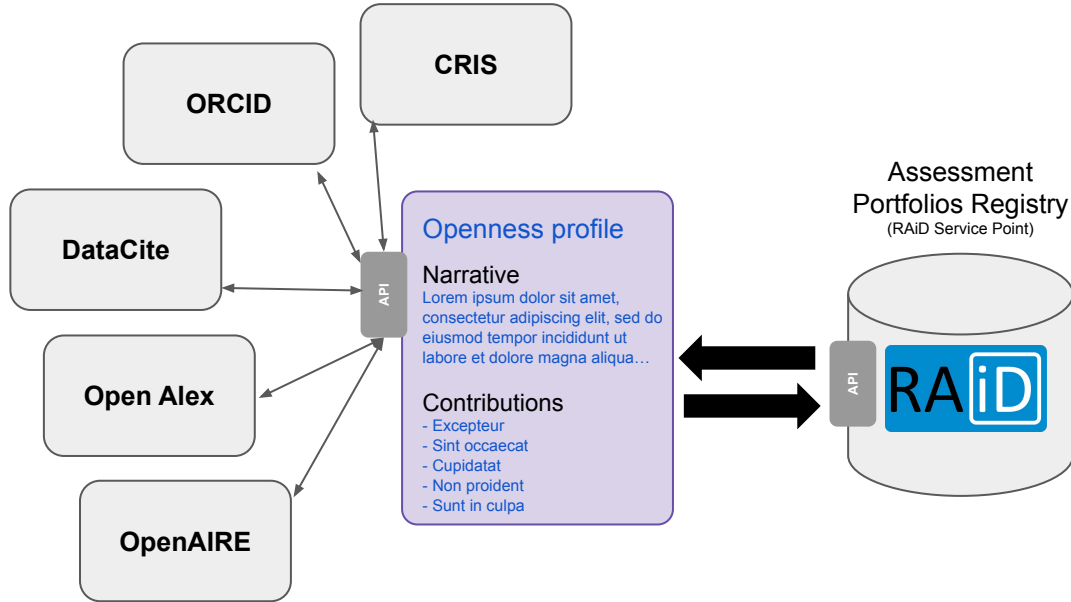
**BrokerMap**  
Romanian language section  
Brokermap Intro Brokermap Search Br...

**Professional Record**  
Showcase your professional background by adding your patents, or entrepreneurial activity.

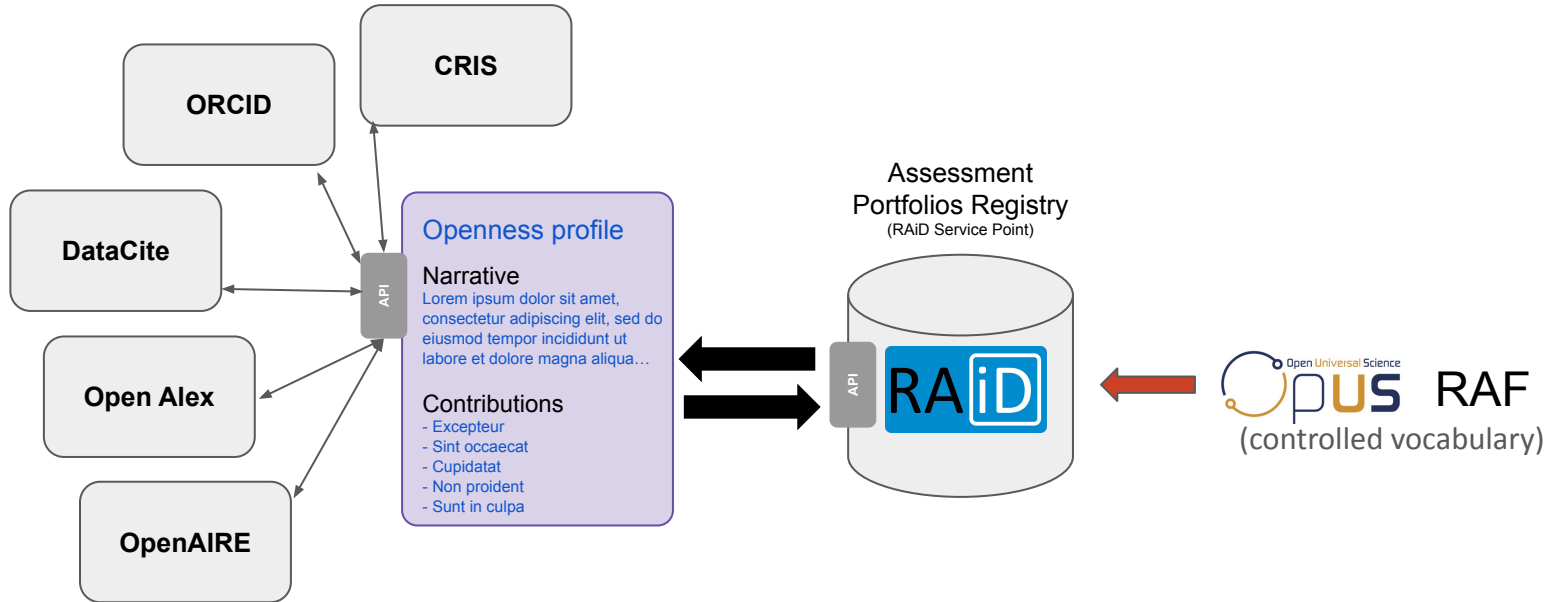
*uefiscdi*  
Copyright © 2024 UEFISCDI  
Terms and Conditions Privacy Policy  
About Us FAQ Contact

## Brainmap Openness Profile (implementation mock-up)

# Openness Profile - API implementation



# Openness Profile - API implementation



# Openness Profile

## Enacting Change in Research Assessment Practices

- ➔ Start from where you are
- ➔ Bottom-up capture of contributions to Open Science
- ➔ Portable & interoperable data



**FAIRCORE4EOSC**  
Core Components Supporting a FAIR EOSC

<https://faircore4eosc.eu>

**graspos**  
open research assessment dataspace

<https://graspos.eu>



Funded by  
the European Union



Thanks!  
c.c.tatum@cwts.leidenuniv.nl

### D2.2 OSAF

<https://zenodo.org/records/11091512>

### D5.2 Pilot findings and progress report

<https://zenodo.org/records/13629147>