



The Horizon 2020 Policy Support Facility 'PSF'

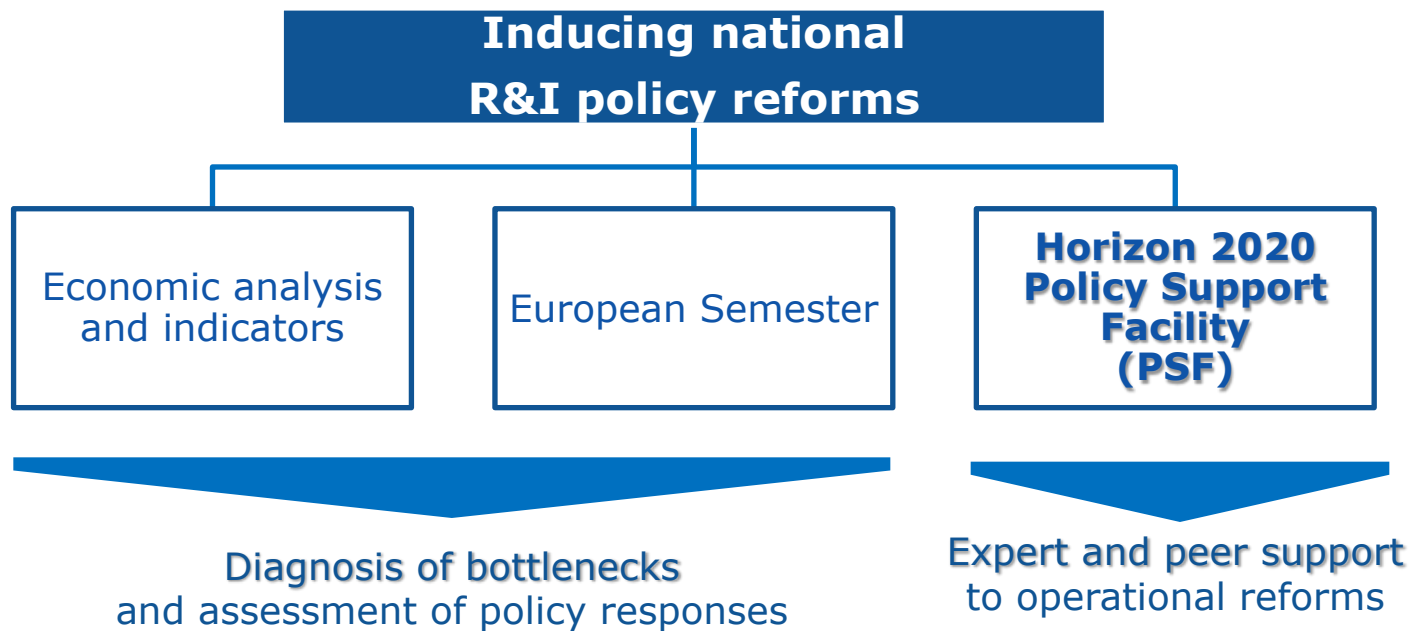
More value and impact
from research and innovation policy

Román ARJONA – Chief Economist

DG Research & Innovation
European Commission

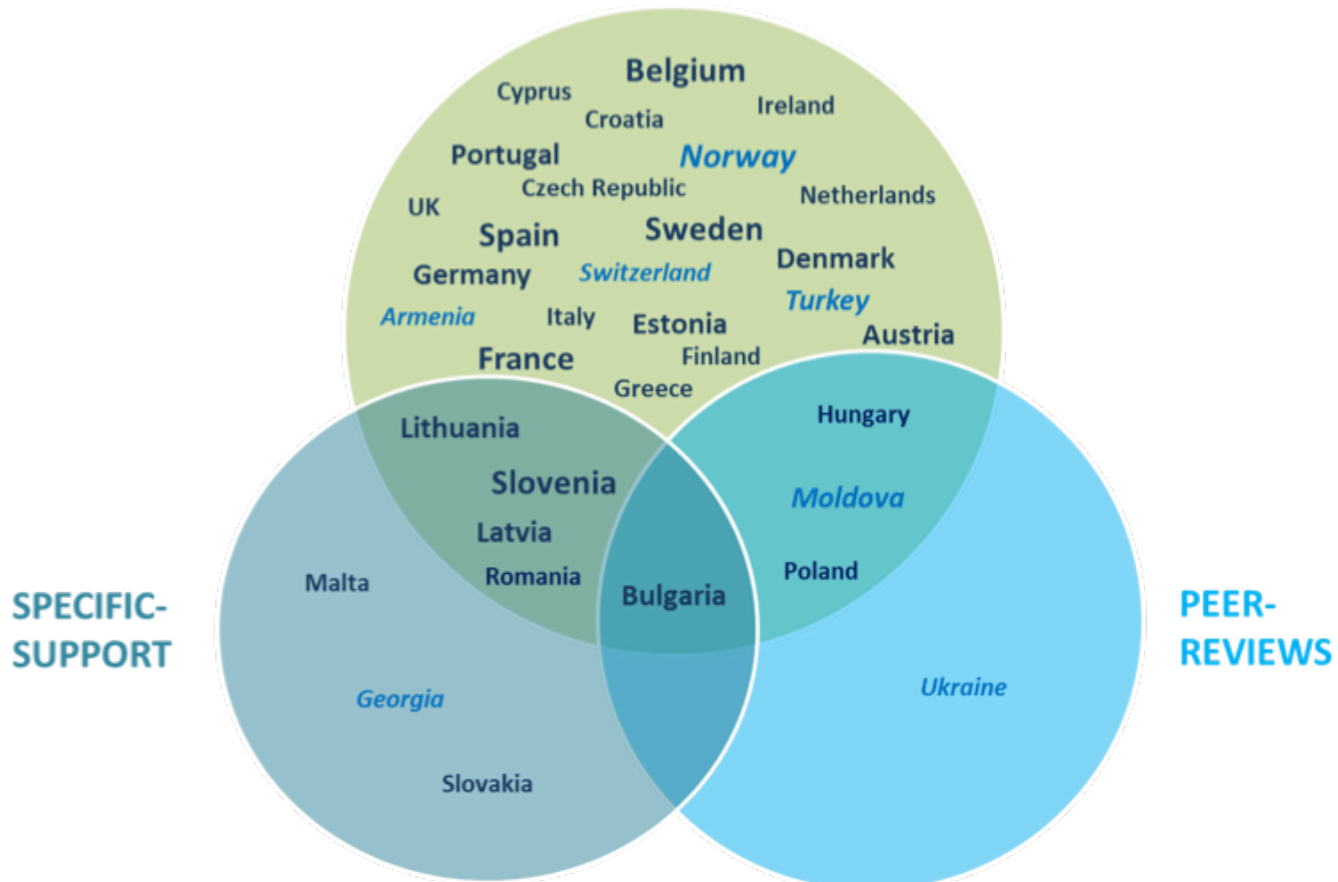
Bucharest, 31 January 2018

Better R&I policies need better evidence



The PSF activities

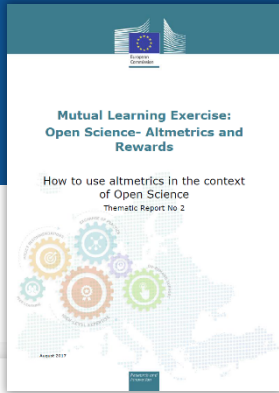
MUTUAL LEARNING EXERCISES





PSF lessons learned

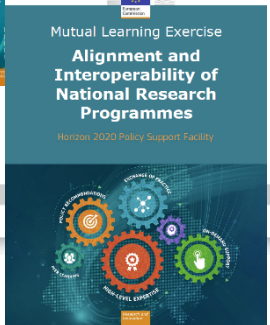
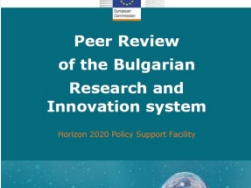
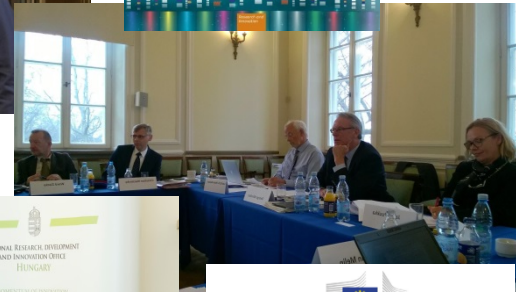
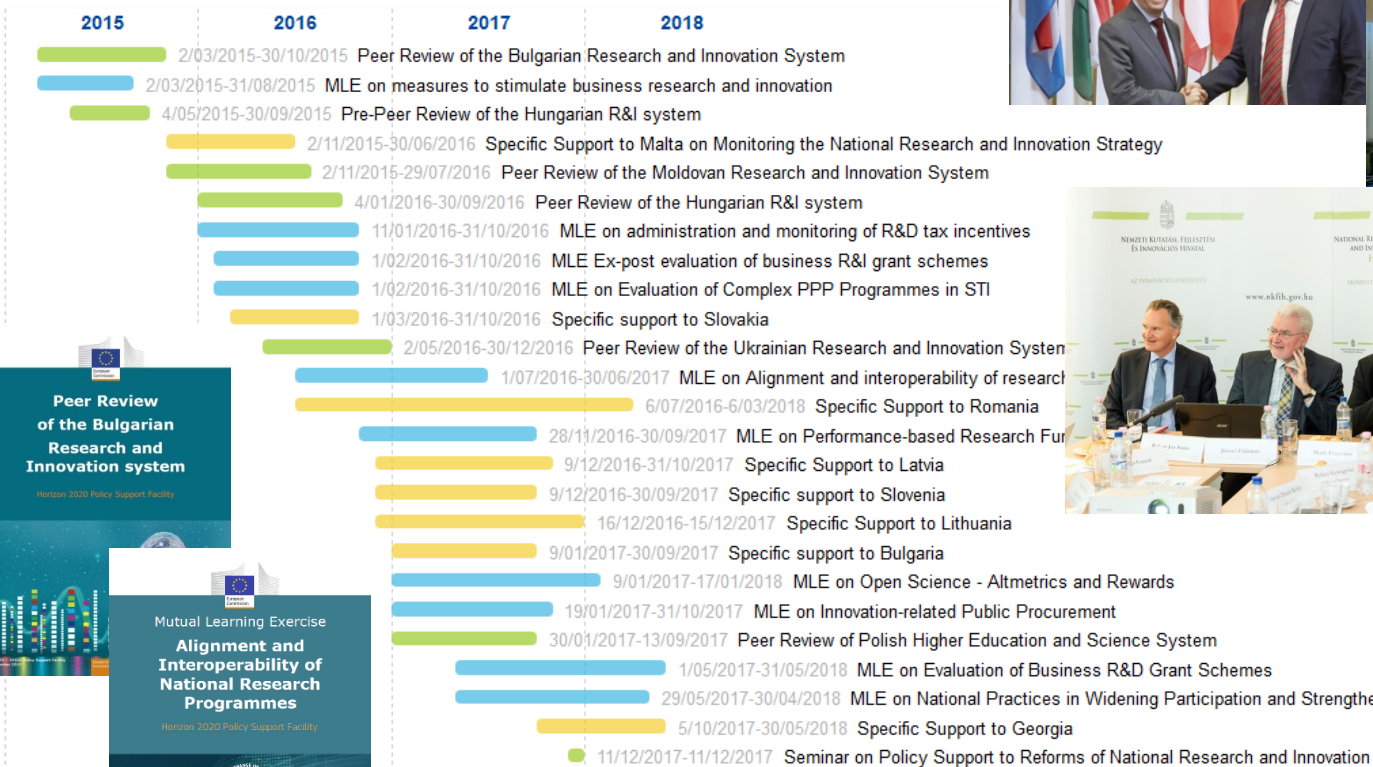
- 15 living activities, 26 since 2015
 - Peer Reviews: cohesion and associated countries
 - MLE: demanded by more developed R&I systems
 - Specific support increasingly demanded overall
- Countries needs
 - Focused advice
 - To access PSF at various stages
 - Possibility for bottom up proposals (besides EoI)
- Successes
 - Concrete reforms
 - Full stakeholder mobilisation
 - Quick response
 - High quality of experts and peers



Some PSF deliverables



Exercises





Goals of PSF Specific Support

Reforms to stimulate innovative entrepreneurship and to create an environment conducive to the growth of technological start-ups

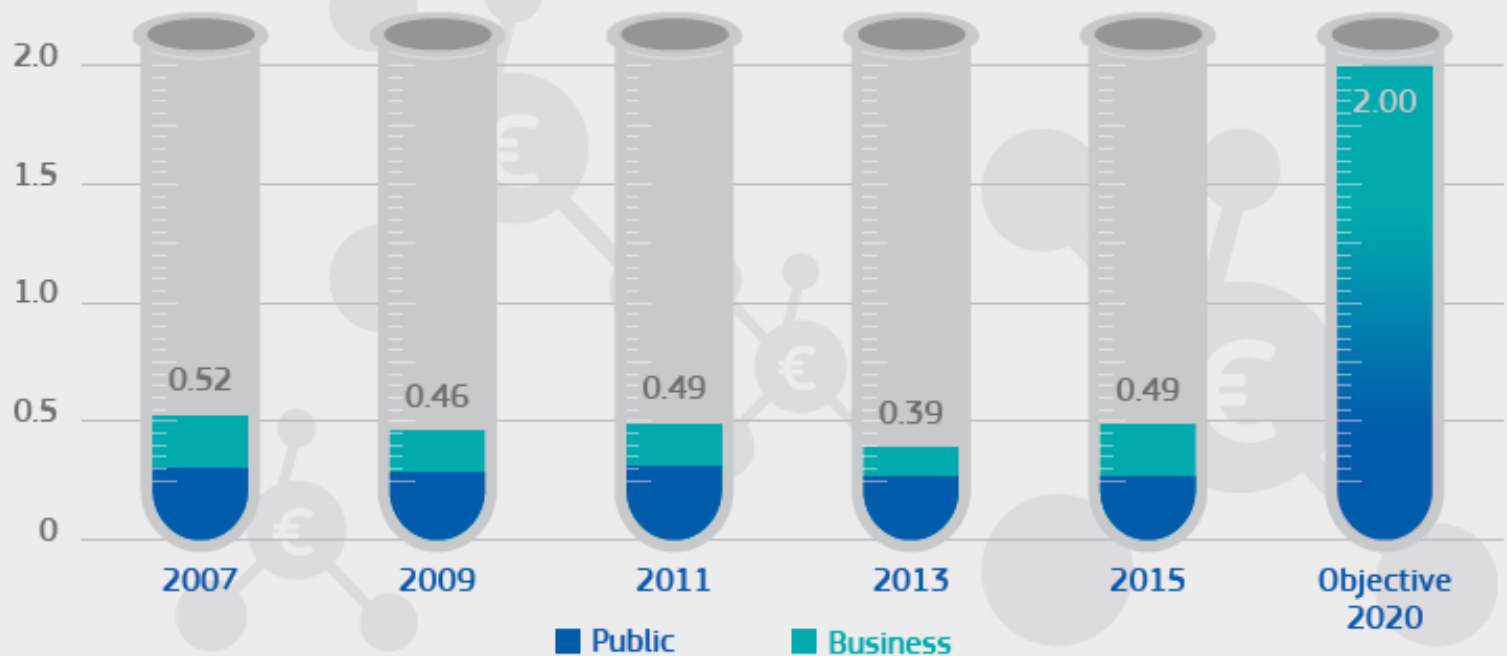
Panel tasked to:

1. Assess the incipient RO innovative entrepreneurship, start-up and scale-up ecosystem
2. Identify and recommend measures and specific instruments strengthen it

Particularly relevant for R&I in Romania

INVESTMENT IN R&D ► R&D SPENDING

Although R&D intensity improved in 2015, it remains one of the lowest in the EU
The lack of progress towards the national target impedes the building-up of R&I capacities

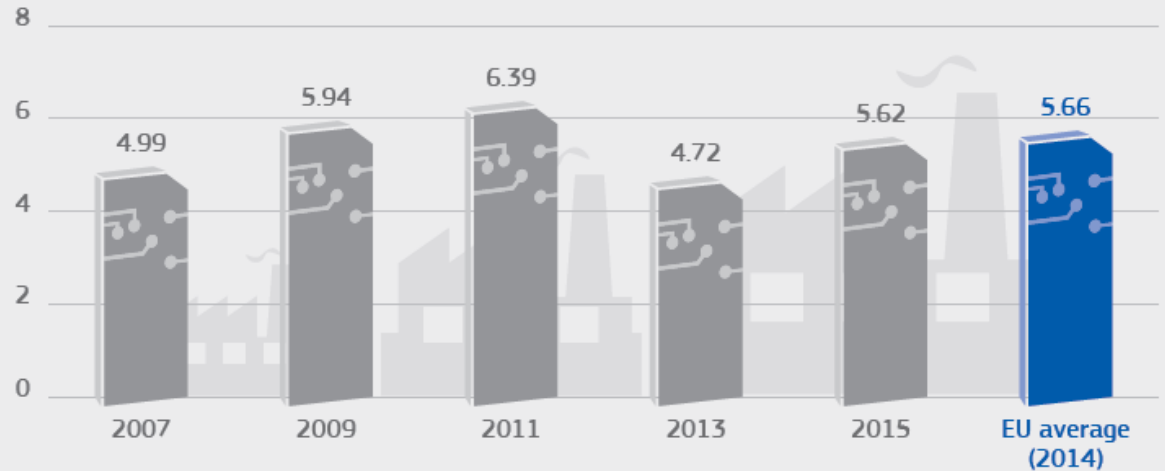


R&D intensity, showing public and private components (total R&D spending as % of GDP)

STRENGTH OF R&I SYSTEM ► MEDIUM- TO HIGH-TECH MANUFACTURING

A large medium-high-tech manufacturing sector offers opportunities for R&I

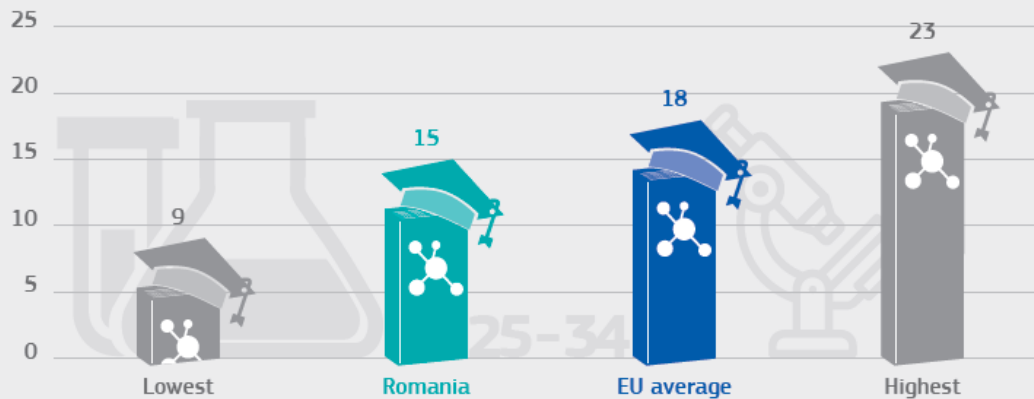
**Build on strengths
and accelerate reforms**



Value added in medium-high-tech manufacturing as % of total value added

STRENGTH OF R&I SYSTEM ► HUMAN RESOURCES

The Romanian economy benefits from a large talent pool in science and engineering

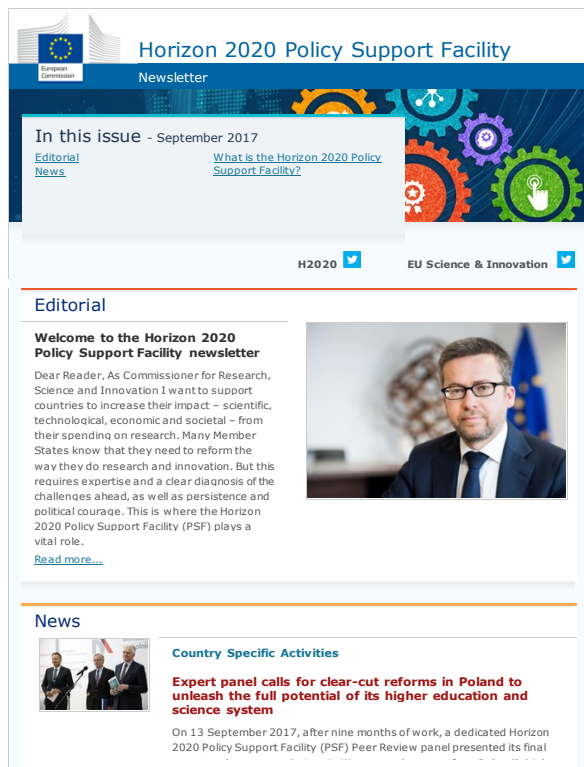


Number of new graduates in science and engineering per thousand population aged 25-34 (2014)

Talent
Growth/ TFP
Investment
Emerging ecosystem
Drive to reform
EU funding

RTD-PSF@ec.europa.eu

- **Monthly H2020 PSF Newsletter**



Horizon 2020 Policy Support Facility
Newsletter

In this issue - September 2017
[Editorial News](#) [What is the Horizon 2020 Policy Support Facility?](#)

H2020 EU Science & Innovation

Editorial

Welcome to the Horizon 2020 Policy Support Facility newsletter

Dear Reader, As Commissioner for Research, Science and Innovation I want to support countries to increase their impact – scientific, technological, economic and societal – from their spending on research. Many Member States know that they need to reform the way they do research and innovation. But this requires expertise and a clear diagnosis of the challenges ahead, as well as persistence and political courage. This is where the Horizon 2020 Policy Support Facility (PSF) plays a vital role.

[Read more...](#)

News

Country Specific Activities

Expert panel calls for clear-cut reforms in Poland to unleash the full potential of its higher education and science system

On 13 September 2017, after nine months of work, a dedicated Horizon 2020 Policy Support Facility (PSF) Peer Review panel presented its final

> [Subscribe here](#)

- **Fact Sheets of PSF activities**



MAY 2017 - MAY 2018
HORIZON 2020 POLICY SUPPORT FACILITY
EVALUATION OF BUSINESS R&D GRANT SCHEMES
MUTUAL LEARNING EXERCISE

PARTICIPATING COUNTRIES

Austria	Belgium
Croatia	France
Germany	Lithuania
Norway	Slovenia
Spain	Sweden
Turkey	UK

CHAIR
Marekna Wierca
World Economy Research Institute, Warsaw School of Economics

RAPORTEUR
Martijn Poel
Technopolis Group

EXPERTS
Paul Cunningham
Manchester Institute of Innovation Research, University of Manchester
Pim den Hertog
Georgineomics & Initiative

POLICY MANAGER
Eva Buzická
European Commission

PROJECT MANAGER
Nikos Maroulis
Technopolis Group

WEB PAGE
PSF-Support-Facility
H2020-PSF@ec.europa.eu

OBJECTIVES
The aim is to improve the exchange of information, mutual learning and the identification of good practice among the participating countries in order to put in place better systems for the ex-post evaluation of business R&D grant schemes.

SCOPE

Many countries use R&D grants to stimulate investments into research and innovation (R&I) by private companies, but assessing their effects – whether quantitatively or qualitatively – remains a challenge. Based on the results of the previous Mutual Learning Exercise on this subject, three areas have been identified for further discussions:

- The potential of big data – such as data linking and new sources of data
- Assessing the effect of funding on the behaviour of companies
- Combining qualitative and quantitative evaluation approaches

SCHEDULE

- June 2017: Kick-off meeting in Brussels
- August 2017: 1st country visit to Oslo, Norway
Big data: data linking, new data sources and new analytical methods
- November 2017: 2nd country visit to Stockholm, Sweden
Capturing behavioural change: towards a better understanding of innovation journeys
- January 2018: 3rd country visit to London, United Kingdom
Emerging mixed methods for evaluation
- March 2018: Final working meeting in Brussels
- May 2018: Final workshop

Research and Innovation

... **And others:**

Summary articles of concluded activities

PSF Brochure (soon)

PSF Video (soon)

Tweets of kick-off and final meetings

Translation of Executive Summaries

> For more information visit the [PSF Knowledge Center](#)